



KRVIA

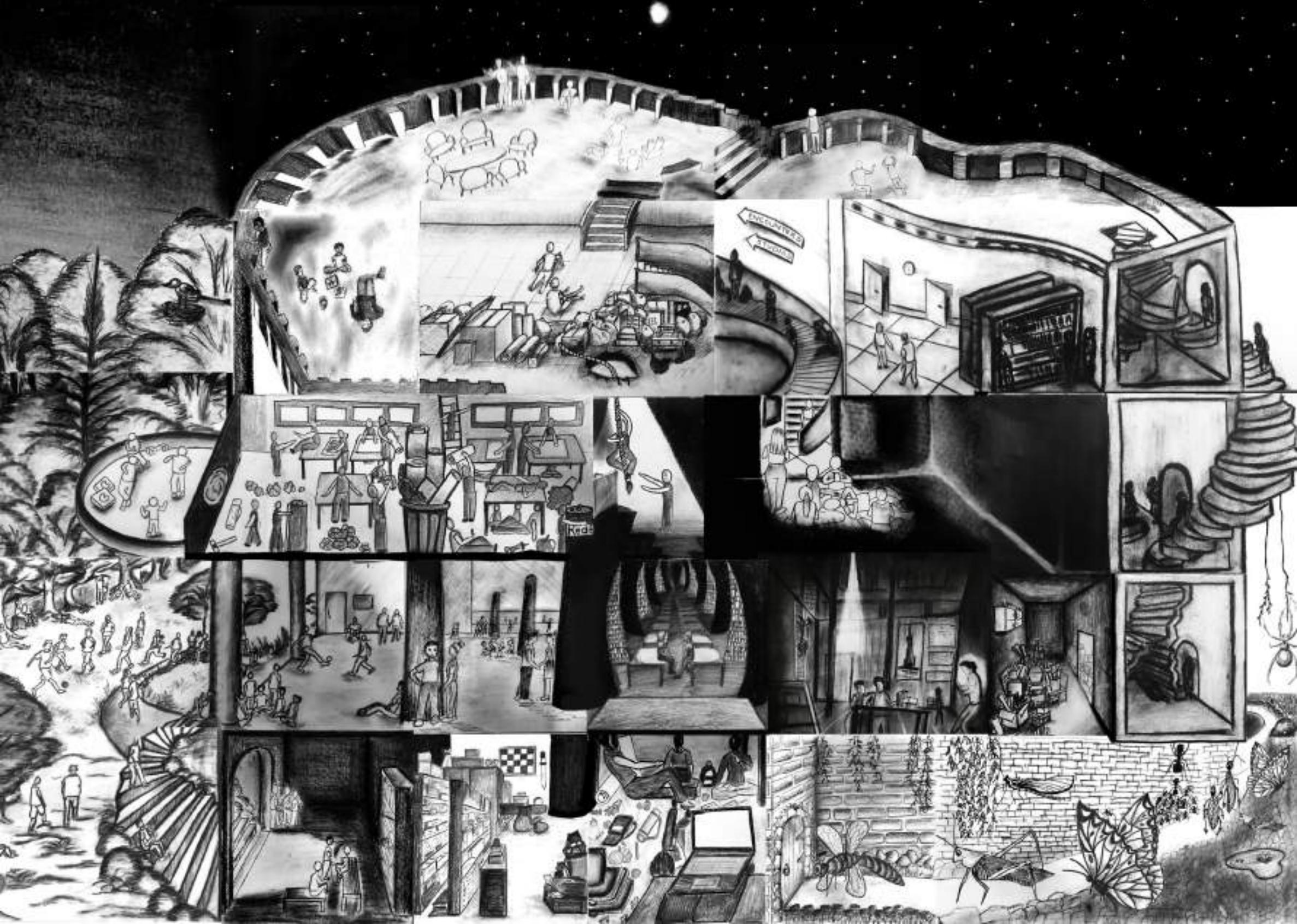
Upanagar Shikhan Mandal's

Kamla Raheja Vidyanidhi Institute for Architecture and Environmental Studies

B.arch

# newsletter

May 2021 edition



j a n



Manoj Parmar was appointed as the new Director of KRVIA.

Vineet Gupta discussed how the city is implementing its ambitious plan, Go Boston 2030.

f e b

Jainami Shah from the 4th year received the First Prize at the Annual Architecture Design Competition held by the Dr. Baliram Hiray College of Architecture on 25th February 2021, for her Sixth Semester Project in Kohima, Nagaland. The competition was aimed at the best architectural design work of the sixth semester students from Architecture colleges in Mumbai and Navi Mumbai which are affiliated with the council of architecture.



Rahul Gore and Jignesh Doshi, discussed the notions of space making keeping in mind the urban infrastructure of our times.  
 Kayzad Shroff and Maria Leon, intended to test the resilience of operational models as the generator for design, attempting to exchange artistic creativity with a controlled creative rationale.

m a r

Sarthak Malunde and Anushri Joshi won a consolation prize for Star India Sparrow Bird House Design Competition.

Biju Kuriakose, explained 'how a practice responds to an increasingly polarizing urban environment'.

a p r

KRVIA announces the online exhibition, 'Scales of Seeing', based on the Semester 4 work of the batch 2019-2020. The studio was an exploration over 22 weeks of the relationship between environment and objects through scale and representation.

The Graduation Convocation program and Award ceremony, for the Bachelors and Masters courses, was held on 17th April 2021. As a part of the Kamla Raheja Memorial Lecture series 2021, the Urban Dialogue exhibition was launched on the Convocation day. The exhibition aimed to initiate a dialogue between professionals, students and fresh graduates, to offer new perspectives to the ongoing discourse on the future of our cities.



Aniket Bhagwat's talk demanded purpose in the time that has gone. It questioned the past, examining if it had any meaning for the cataclysmic present ; if they were decades well spent and did they have the virtuous and ethical bearings to steer the future. Using the work of the studio, it was a soliloquy, begging reflection.

Encounters during the semester:  
 Sharon Irani  
 Vishwa Shroff  
 Sameep Padora and Zameer Basrai  
 Sanyog Rathod  
 Sanjeev Vidyarthi  
 Bijoy Ramchandran

m a y

# The Apocalypse Manifesto

PART ONE

Kamla Raheja Memorial Lecture Series 2021

USM's Kamla Raheja Vidyanidhi Institute for Architecture and Environmental Studies

Join here -  
<https://urlzs.com/QPHje>

Watch Live on

 KR VIA

 KR VIA Feeds

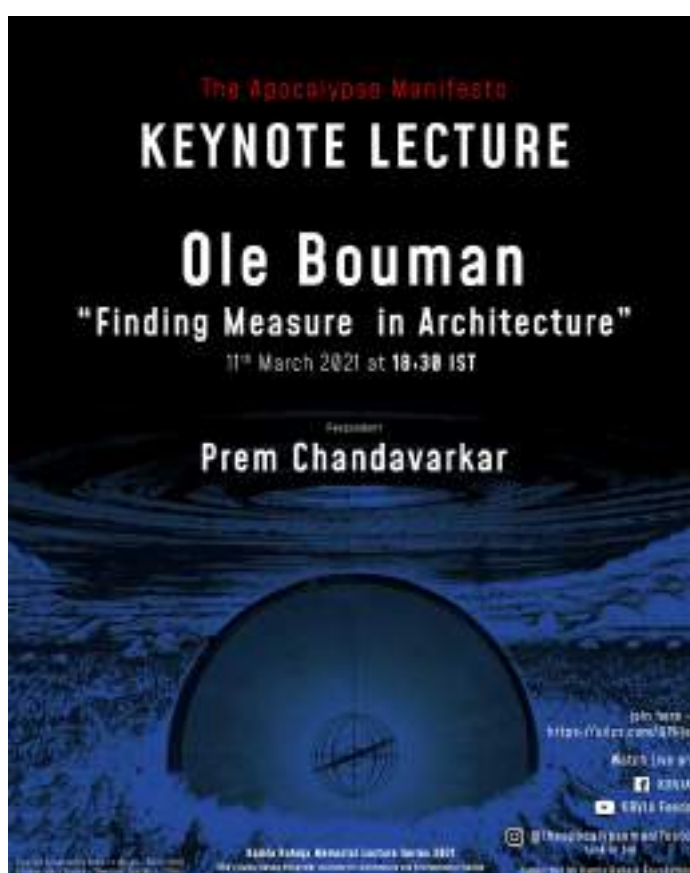
 @theapocalypsemanifesto  
Link in bio

supported by Kamla Raheja Foundation

Inspired by Katsuhiro Otomo's Manga - Akira [1982]  
Etienne-Louis Boulee - 'Newtons' Cenotaph [1784]

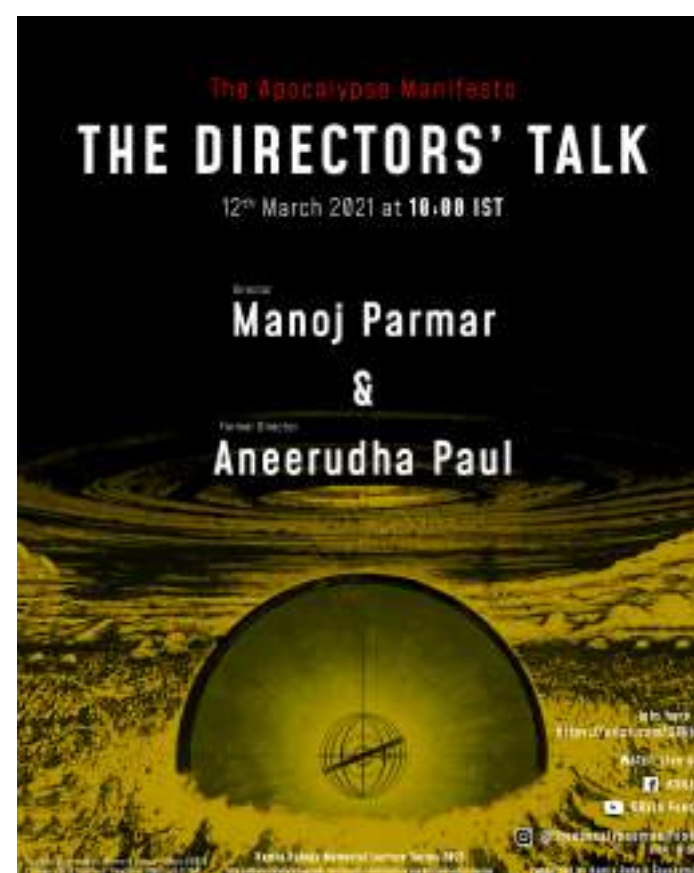
## The Apocalypse Manifesto

The Kamla Raheja Memorial Lecture Series this year called for a new manifesto - The Apocalypse Manifesto. In the coming months, the school plans to invite critical practitioners of the built environment to think once again about the human condition and the hope of a radical architecture of thought and action - an architecture, realistic enough to demand the impossible. A series of events around the theme were planned throughout the year beginning from March 2021. The first event opened out with a series of Electives followed by a Public Lecture and ended with the Dissertation Colloquium. The Electives, Keynote Lecture and the Dissertation Colloquium folded into each other through three different forms of engagement exploring the idea and structure of the Manifesto.



### The Keynote Lecture

The first event of the building of 'Apocalypse Manifesto' was a talk by the architecture theorist & curator 'Ole Bouman' on 'Finding Measure in Architecture'. Bangalore based architect and academician Prem Chandavarkar responded to his lecture and helped direct and catalyse the next set of lectures and events for the year.



### The Director's Talk

The second event began with KR VIA's former Director, Aneerudha Paul establishing the importance of architectural education and the position that KR VIA has taken over the last 29 years. This was followed by a lecture by Manoj Parmar, the newly appointed Director of KR VIA. At the cusp of change brought about by the pandemic, Manoj discussed the vision of the school and its trajectories to situate architectural education and practice.

## INTRODUCTORY WORKSHOP : Building The Imaginary School

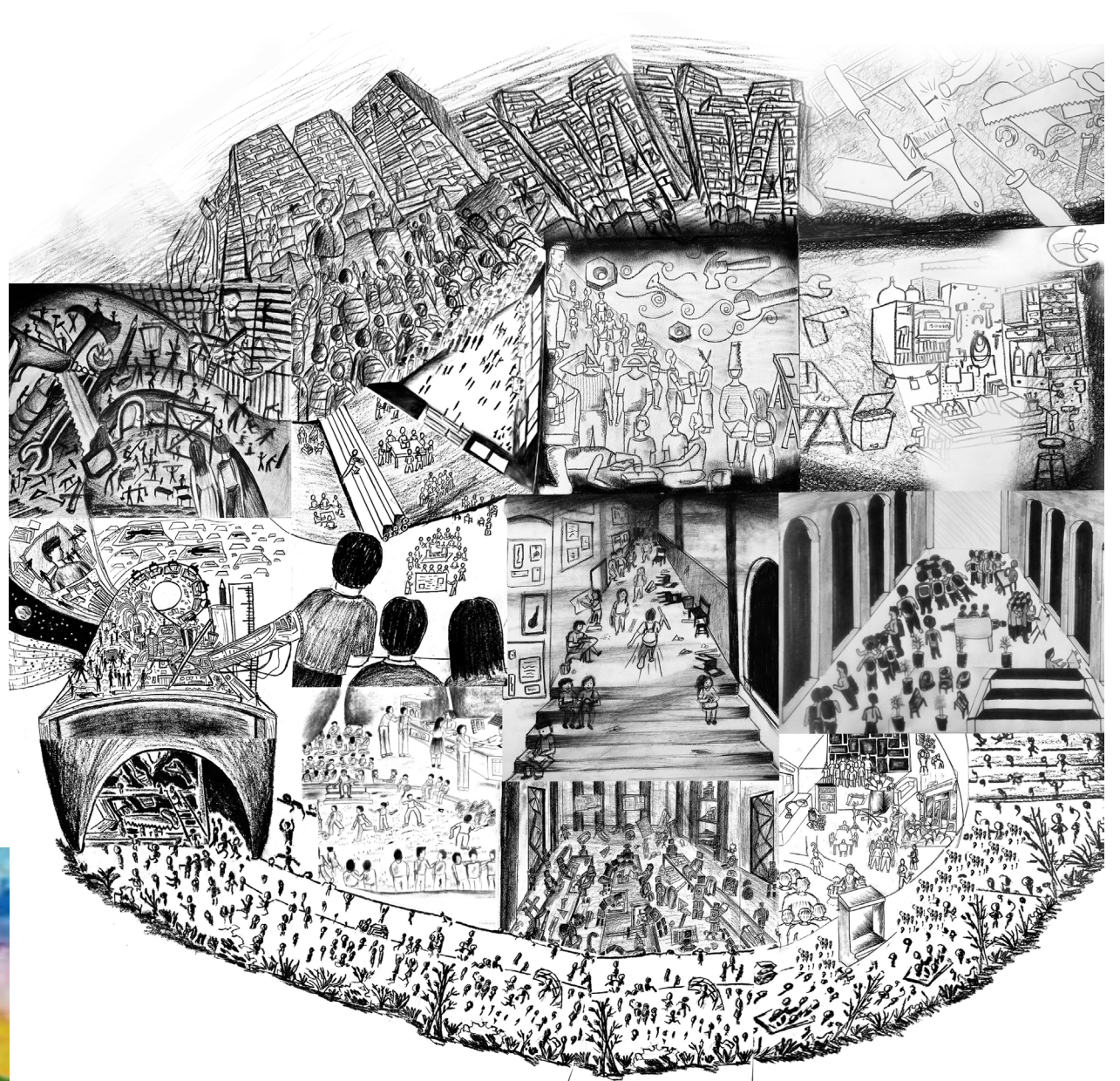
The 'First Year Introductory Workshops' that were initiated in 1996 served several parallel purposes. The intent was to initiate new students coming from a classroom based instructional mode of learning, into thinking through making and learning, through play and pleasure. It also functioned as a way to get to know the student community through teaching assistants who become friends and advisors through the first year of architecture school. More importantly through group work, it built the students into a community of friends and colleagues.

This year, we faced the difficulties of distance and isolation. The Introductory Workshop, 'Building the Imaginary School' was designed as the building of the community and the building of the KRVA as a space, as stories, virtually. The fifth year teaching assistants constructed a list of clues as questions that the first year batch were given, along with names of sources or informants, who were students from the senior years. Each student in the manner of detectives, collected stories about the school into which they are entering and made drawings of the stories they heard. The various drawings and stories were brought together under themes such as 'the hidden school', 'the school as an escape', 'school as a machine', 'the school of fantasies' and 'the school of events'. The imaginary KRVA was built collectively under the various themes by groups of first year students virtually, like an exquisite corpse project in the form of a combinatory narrative map over Miro and Instagram.

Faculty: Ankush Chandran, Mansi Bhatt, Mamta Patwardhan, Sandeep Menon, Shirish Joshi, Sonal Sundarajan

## SCHOOL AS AN ESCAPE

School as an escape depicted a 'getaway' from the stressful world of college. A collection of many fun stories and experiences of college life were united by the idea of recreation and escape from the reality. The drawing tried to show the transition of feelings in different places through escape tunnels and stairs that binded the stories and spaces of school. It was imagined as a ride from the balconies, to the garden and parks, through the studios, washrooms and the canteen. With trees, the grass, greenery and gardens, it tried to bring onto paper countless memories. The drawing attempted to look back and reminisce about the time when one sat under the wide spread tree and napped or a took short walk through the mini foresty path, amidst other places in college. School as an escape was an endless loop of in and out, stress and relaxation, reality and the wonderland of the everyday school.



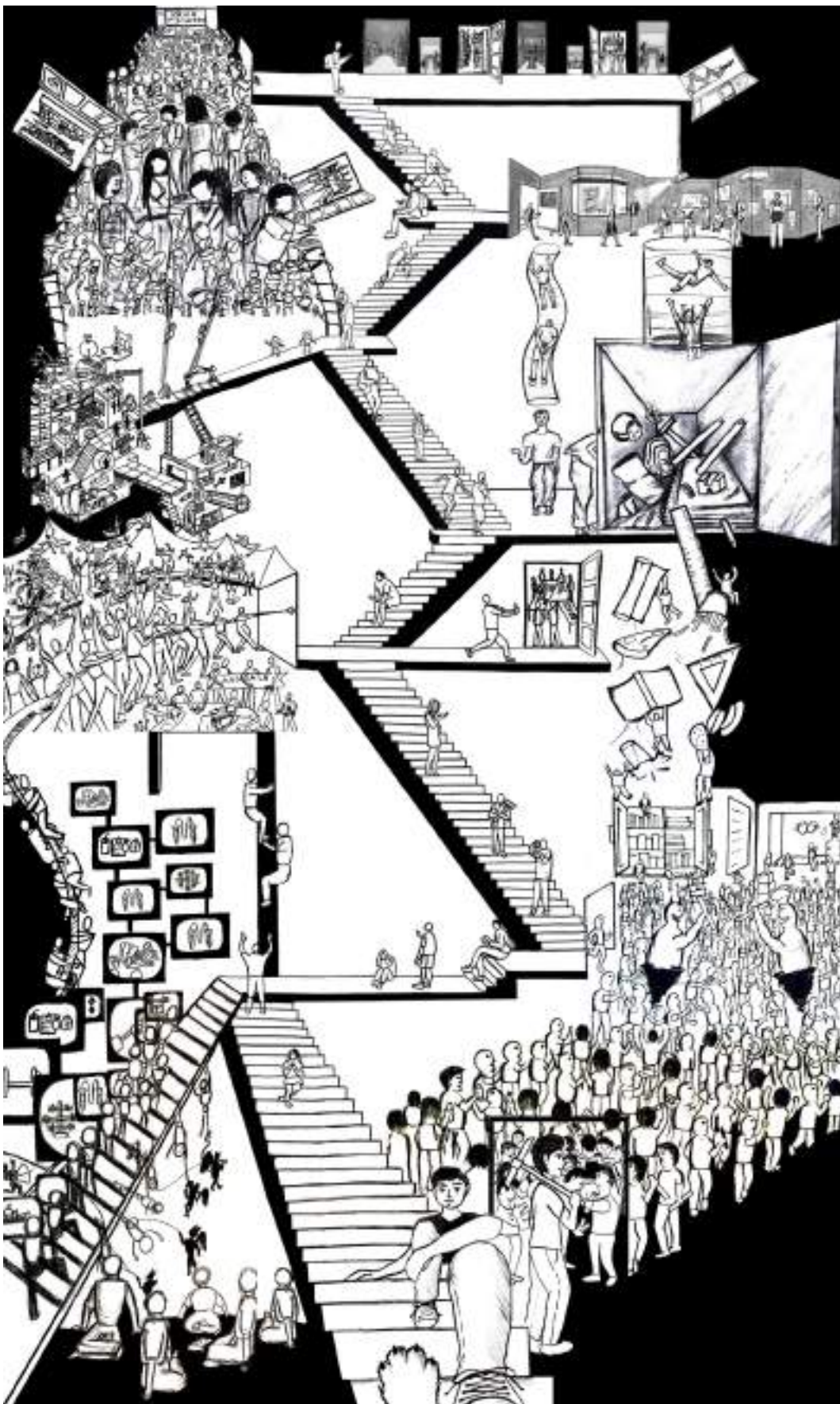
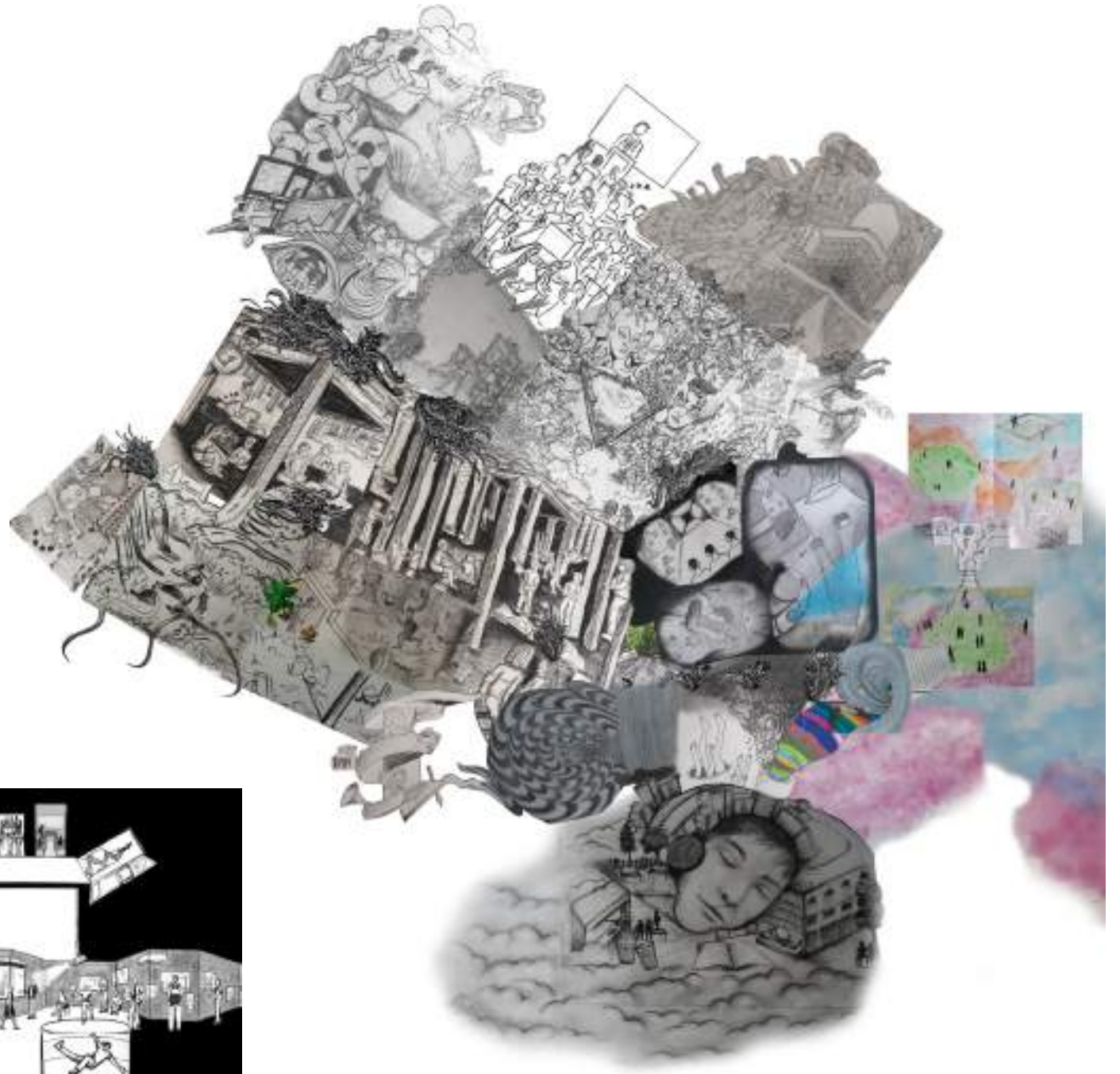
## SCHOOL AS A MACHINE

Architecture, a field of extreme hard work was imagined to transform the school into a machine. The school was imagined to turn into a factory where students worked like robots, day and night to produce work. The life inside and outside of the college was depicted to be completely opposite, transforming the student based on the environment. Working for monstrous submissions, making their way through the room of requirement, being in the foggy lobbies, canteens, truly made their lives revolve around the workspaces. The humongous work, the deadlines, crits received from the faculty are depicted to be followed like how machines obey orders. To escape from this monotonous machine life, students were imagined to go outside to the garden and ground to play, gossip and unload their burden, again ending up spending their nights crawling back to those studio spaces to repeat the cycle all over again. The drawing depicts that cyclic rhythm that is imbibed by the student while they work like machines.

**SCHOOL OF FANTASIES**

The school of fantasies was shaped through the narratives, stories and memories of the lived. The drawing delved into dreams about the college transcending through a hidden portal to the innermost parts of our collective subconscious. The mind was subjected to a perpetual state of absorption of their surroundings; an endless void formed without a sense of space and time.

Throughout the drawing, the realm of fantasy was explored. Just like in a dream where everything emerges and disappears into one another forming an infinite loop, various stories in the drawing flowed into each other. The constant shifting of planes, the metamorphosis of forms and the perpetual daze of a make believe is imagined to be felt throughout.

**SCHOOL OF EVENTS**

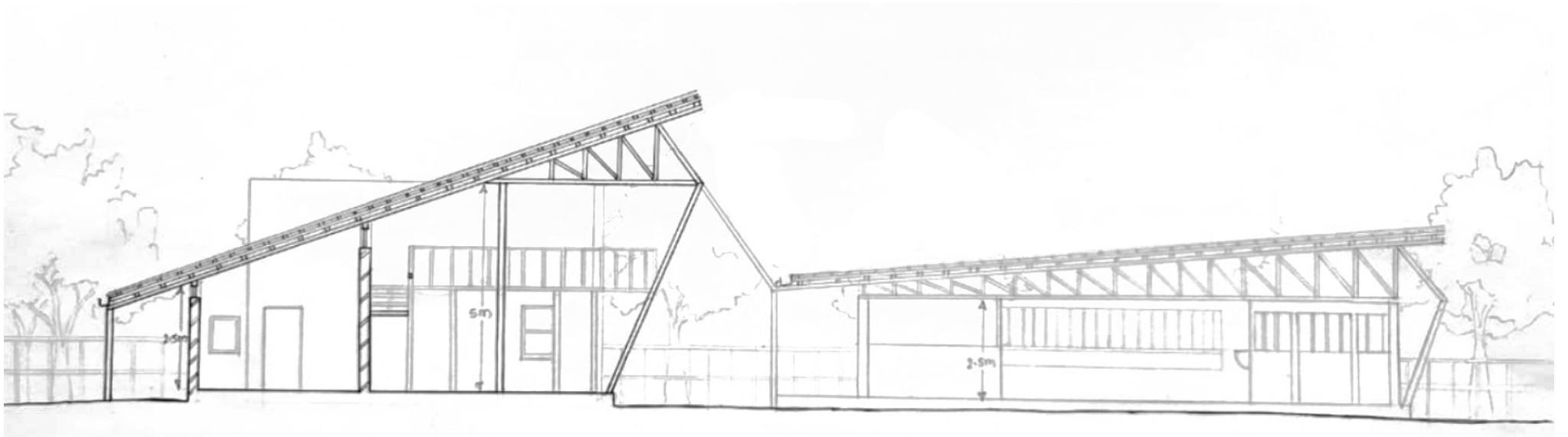
Whilst all of us had visited the space of the school once, it somehow didn't feel like we'd experienced it. It was empty, hollow and devoid of its activities. The stories collected from our informants made us realise how the space of the school almost became insignificant when its activities took over.

The drawing attempted to show how activities and events create the space of the school and the school was imagined to be a trail of certain characters that inhabit the different spaces inside. The building unfolded itself to showcase events through the narrative of a witch on its hunt, provoking people to open up doors in search for exits which led them to different spaces of the school juxtaposed with other events that became what the school is and made it a whole.

## INTEGRATED DESIGN STUDIO - Horse Stables

The second semester Integrated Design studio studied the various systems and their principles. It explored building systems and the relation of building to context, topography, structure, materials and behavior. The exploration of vernacular and traditional architectural assemblies assisted in developing analytical skills to comprehend climatic responses, material, structure and forces. The design program explored tectonic and stereotomic ideas for the inception of the built form and to resolve details through an understanding of the elements of form and space.

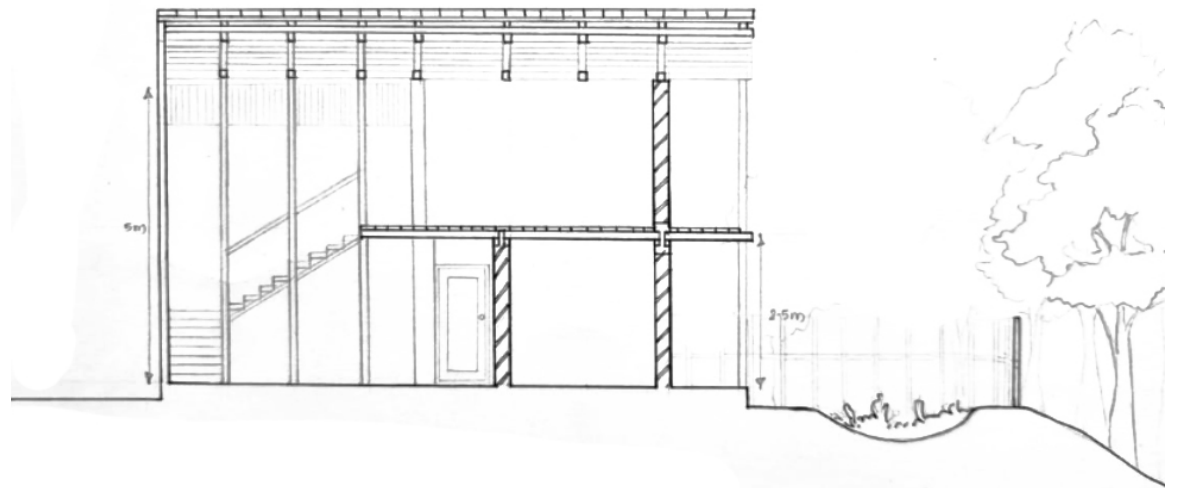
Faculty: Aishwarya Padmanabhan, Ankush Chandran, Apoorva Iyengar, Ketaki Tare, Mamta Patwardhan, Sandeep Menon, Shantanu Khandkar, Sonal Sundararajan.

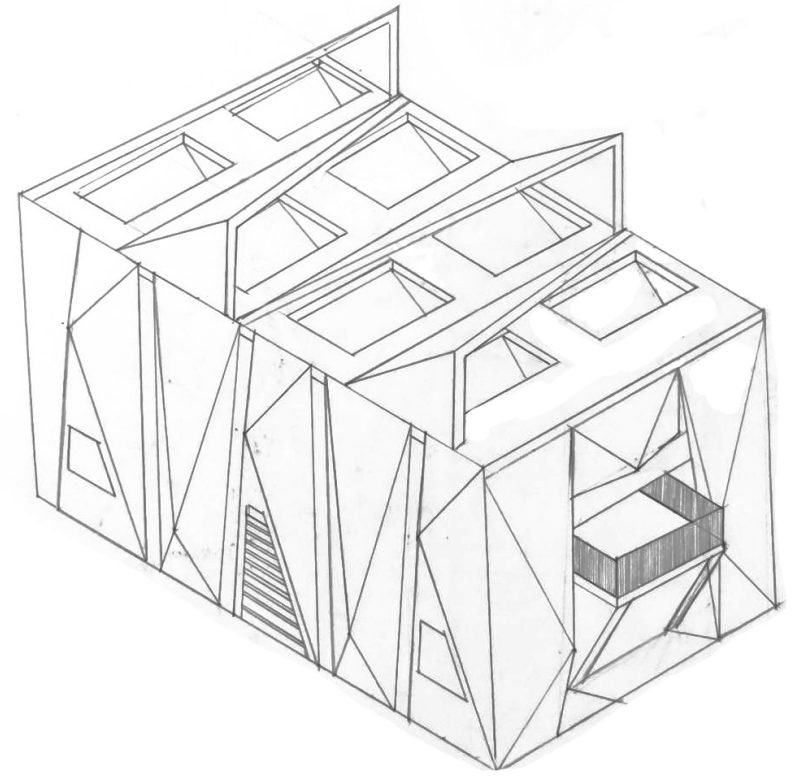
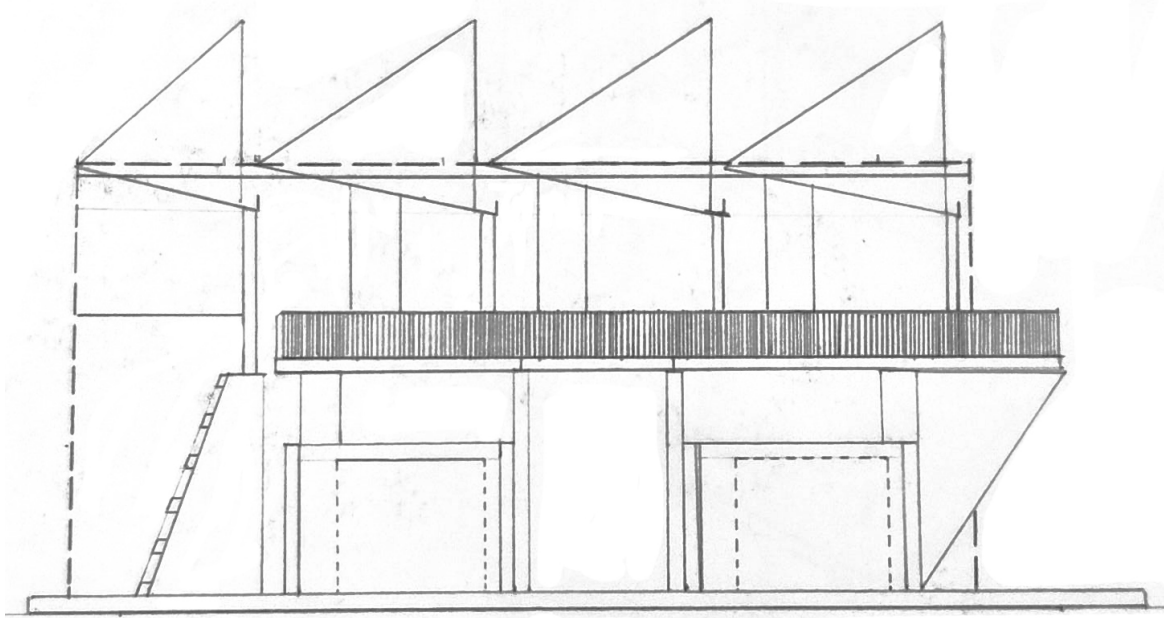


### FLYING HOOVES, SANGLI

Pornima Kotecha

The project was to design a stable and other related spaces for a 'Horse Riding program' in Schools. The chief intent of the design was to create a structure that is sustainable, looks upon the needs and comfort of the horses and cherishes the beautiful nature surrounding the site. The elevated angle created an interesting form while also functioned on bringing the morning sunshine in brightening the interior space. The large openings let the cool breeze flow through the structure creating a pleasant environment for the students and the horses. The design focused on maintaining the connection between the landscape that embodies a beautiful pond, the interior and the school.





### Manas Dodia

The project located inside BMC ground, Mahavir Nagar was created with an aim to make a comfortable abode for horses used in ceremonial events. The stable was placed at the periphery of the ground at a location, least noisy, surrounded with maximum trees. The design evolved keeping in mind the horse-human interaction as well as the spatial experience of the user. The roof was designed such that it draws in morning north light. The facade system acted in conjunction with the roof form. The stable aimed to create a visual connection to the cricket ground. The mezzanine floor thus extended to an open balcony so that anyone inside the stable could enjoy and view the activities of the cricket ground.

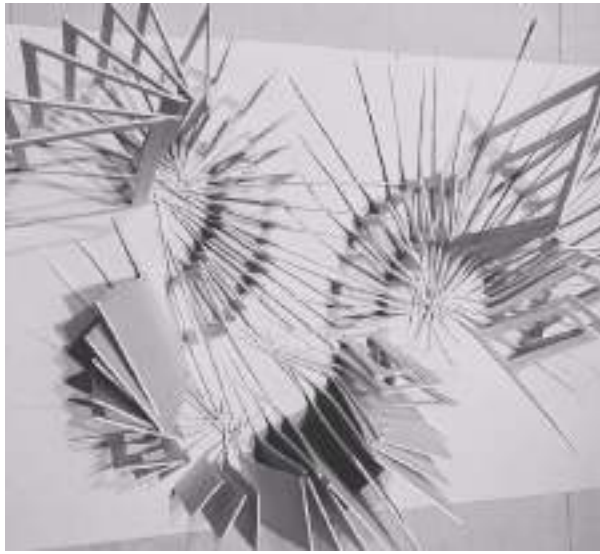


ALLIED DESIGN STUDIO - The Garden of Memory

Objects can signify, evoke emotions, memories and create identities. Each student had to select an object and through it construct an interface that creates order/ illusion/coalition/alliance with the past and the imagined future. They made scaled models exploring the ways in which one can experience and consume the memory space, the ways in which this memory space can be accessed through the object and through formal operations the ways it can be actualised into a physical space.

Faculty: Aishwarya Padmanabhan, Apoorva Iyengar, George Jacob, Mansi Bhatt, Misbah Hararwala, Nikhil Khadilkar, Shirish Joshi, Shivani Shah, Sonal Sundararajan

Netraa Ravichandran



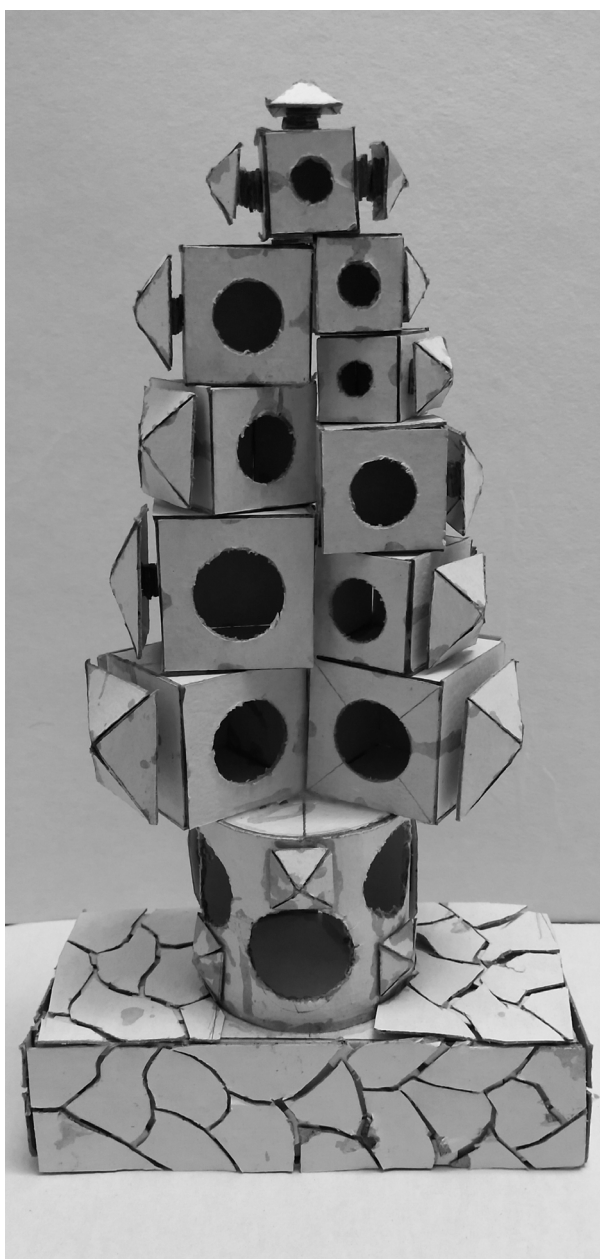
Sanika Lagu



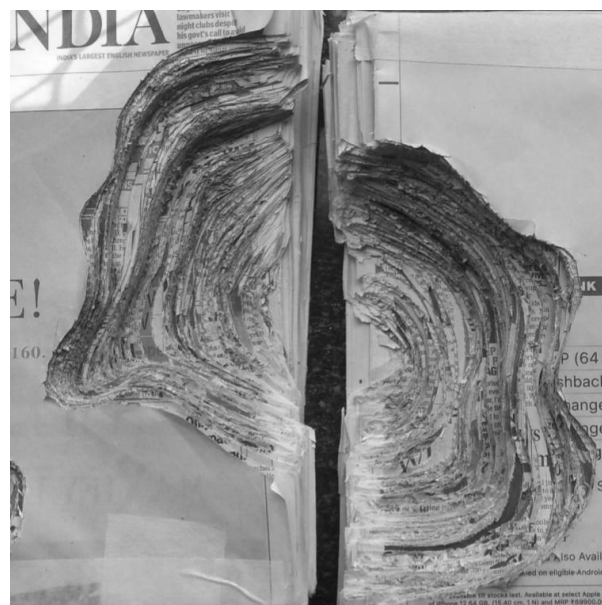
Sejal Amilkanthwar



Vipul Mali



Rohaan Patel



Prisha Shroff





## ARCHITECTURAL DESIGN STUDIO : Building in Landscapes

The intent of the Fourth semester Architectural Design Studio was to enable the student to learn to organise collective dwelling spaces in relationship to each other and in a sensitive historic / metaphorical / mythic context. This was then taken forward to create conceptually rich and contextually appropriate architecture. Five sites in different geographies across India were selected.

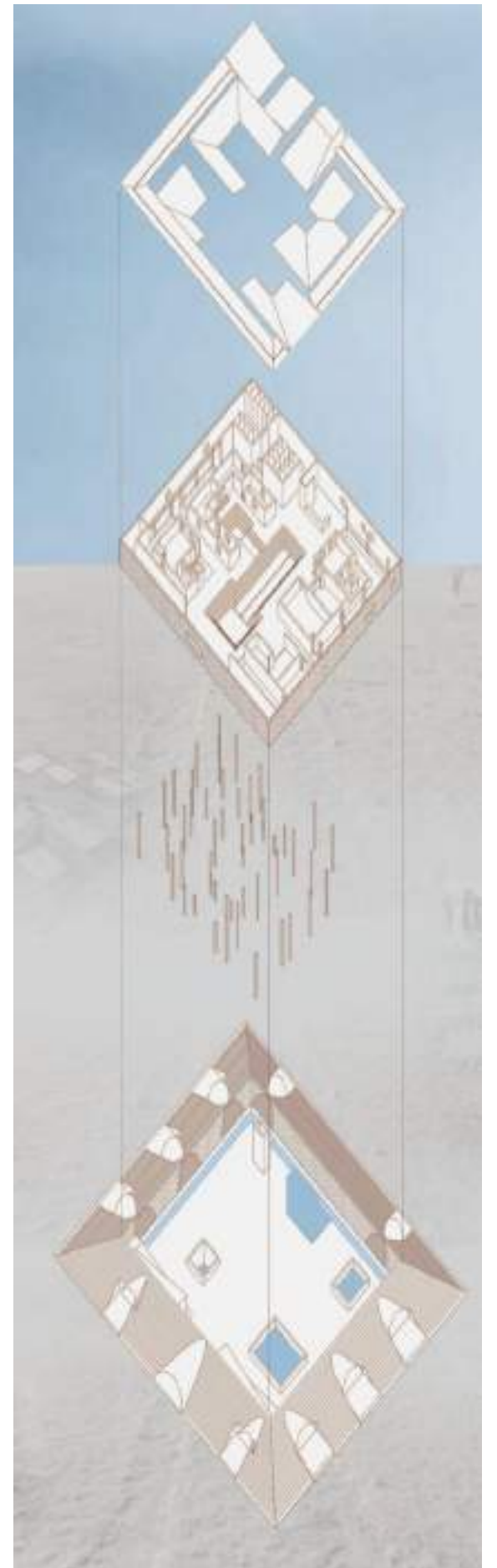
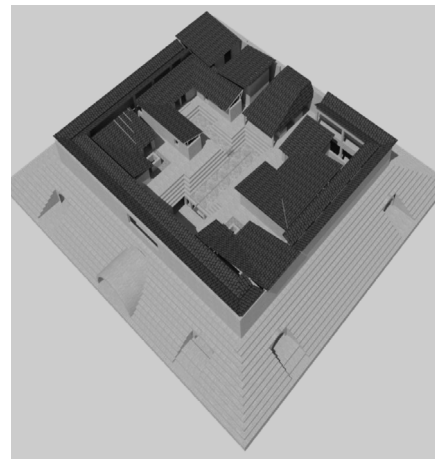
Faculty: Advait Potnis, Misbah Hararwala, Nemish Shah, Pinkish Shah, Rohan Chavan, Rutika Parulkar, Shilpa Ranade, Sonal Sancheti



### THE AGRARIAN CITADEL

Arushi Kelshikar

The Agrarian Citadel was imagined to be a community housing project in the Little Rann of Kutch, designed for the Agariya community of salt miners. Drawing its inspiration from the ancient city of Dholavira, the structure is imagined to exhibit seasonal transformation of program in tandem with their occupation and geology. The Citadel aimed to be a robust water catchment and storage contraption in a severely drought stricken area. It pushed the agenda of making the agrarian community self reliant and self sufficient.





### NEGOTIATING WILDERNESS, MAWPHLANG Pranjal More

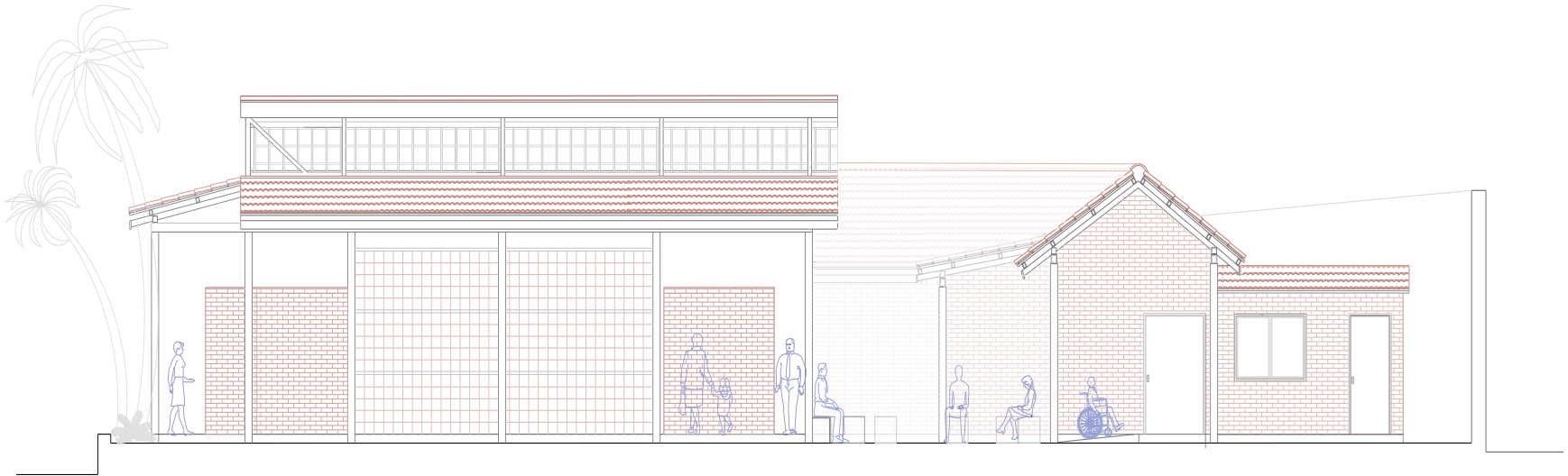
The intervention tried to enhance the mysterious feeling of the location owing to the myths of the sacred forest into a spatial experience. It sat in the geography of the forest on ground and suspended on trees, using three levels of experience— Earth, Between Sky and Earth and Sky. The pathways are designed linear yet confusing attempting to change a person's amount of vision, sometimes showing what's around and sometimes just the sky. A community is built at all levels owing to the organisation of the programs. The materiality of the structure, mainly timber and bamboo helped in creating a sense of familiarity for the locals and also helped in amalgamating the building with the forest.



INTEGRATED DESIGN STUDIO: Community Wellness and Comfort Station

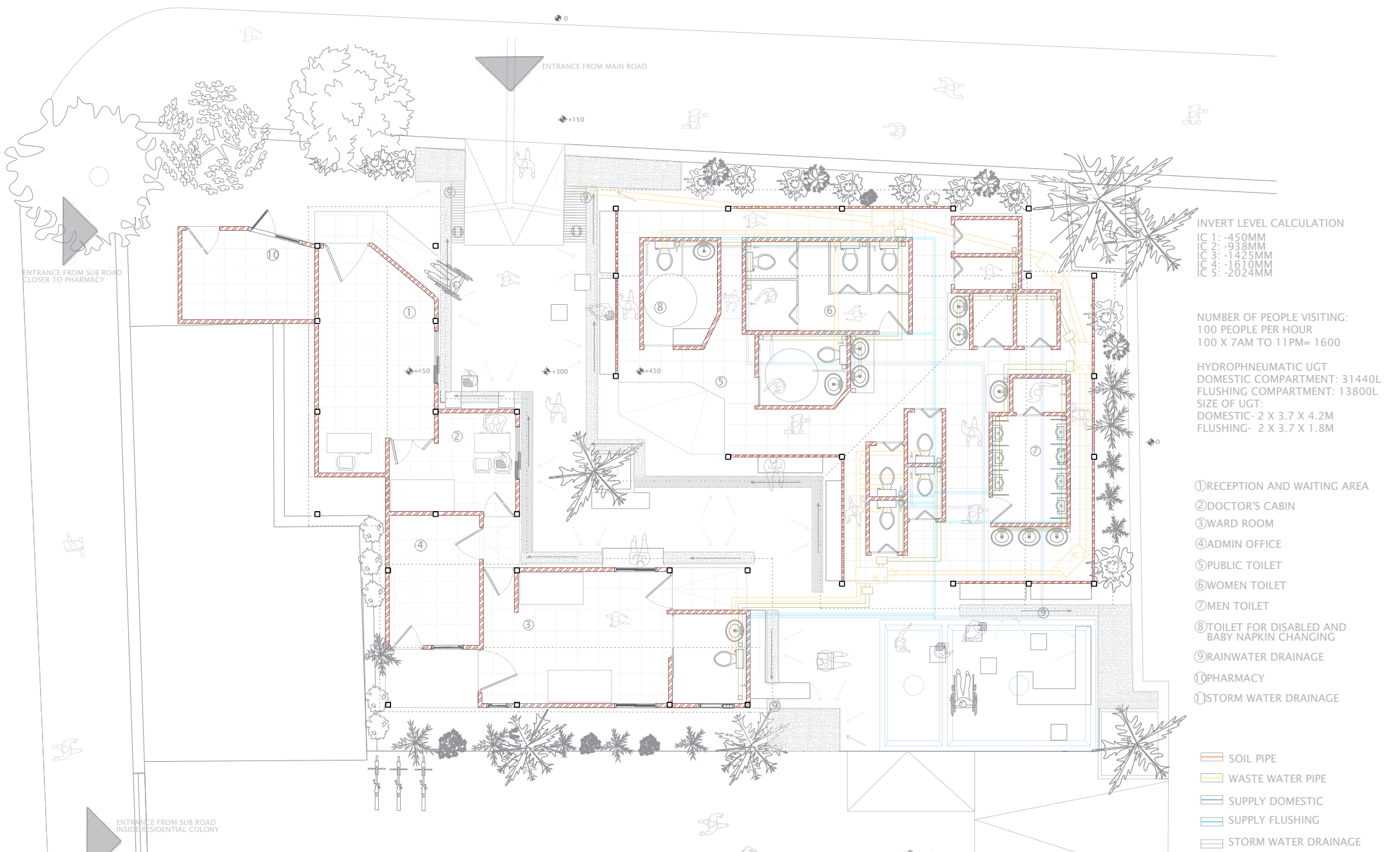
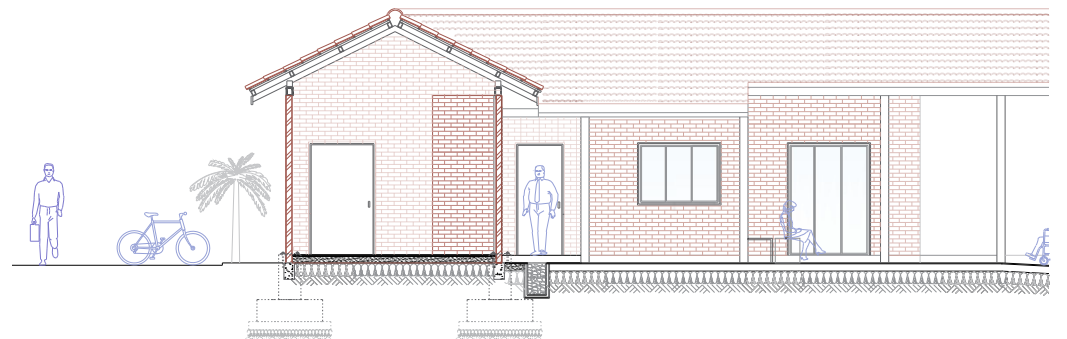
The pandemic has shown the need for wellness infrastructure in our cities. As a part of the second year Integrated Design Studio, the students designed a 150 sqm built up Community Wellness and Comfort Station. The community wellness and comfort station attempted to address not only the immediate infrastructural need for access to sanitation and healthcare, but also to act as a much needed rallying point for community mobilization for future public health challenges. In the course of the design process, students came across and thus learnt to address myriad problems, including those of use of limited resources, inequities in access to facilities and the stigma attached to discussing wellness issues. The main focus of the design project was to develop a holistic thinking about materials and technologies and how various elements and components of building and building design come together. Students applied acquired knowledge of structural spans, organization and space, climate and services from both semesters to synthesize a project.

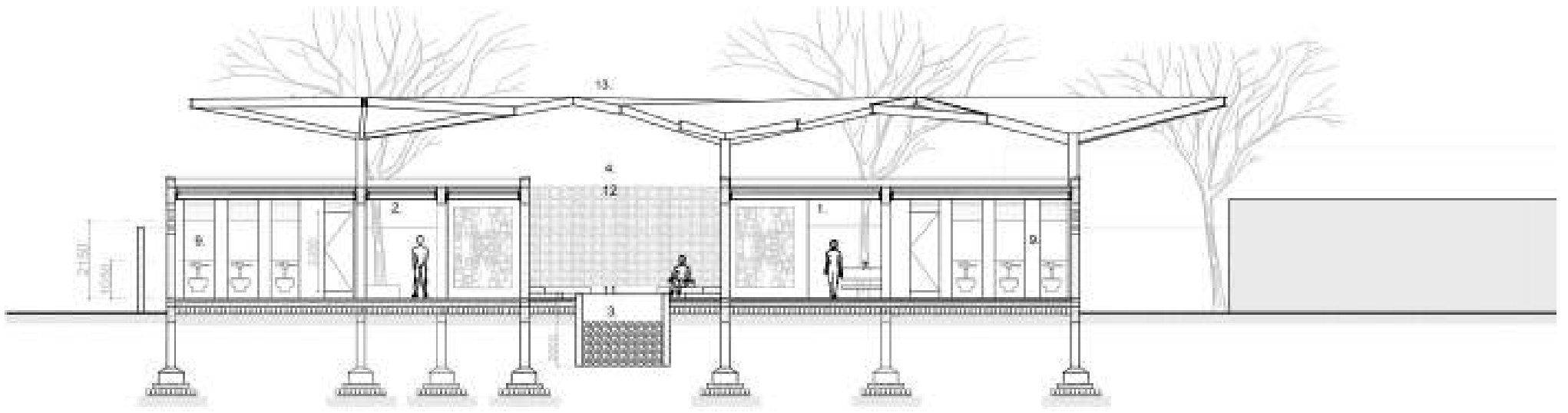
Faculty: Ankush Chandran, Mamta Patwardhan, Neeraj Vakharia, Neha Parulekar, Rutika Parulkar, Sanaeya Vandrewala, Shantanu Khandkar, Shirish Joshi TA: Ashwini Gawli



**PUBLIC CONVENIENCE, VERSOVA**  
Rhea Jugalia

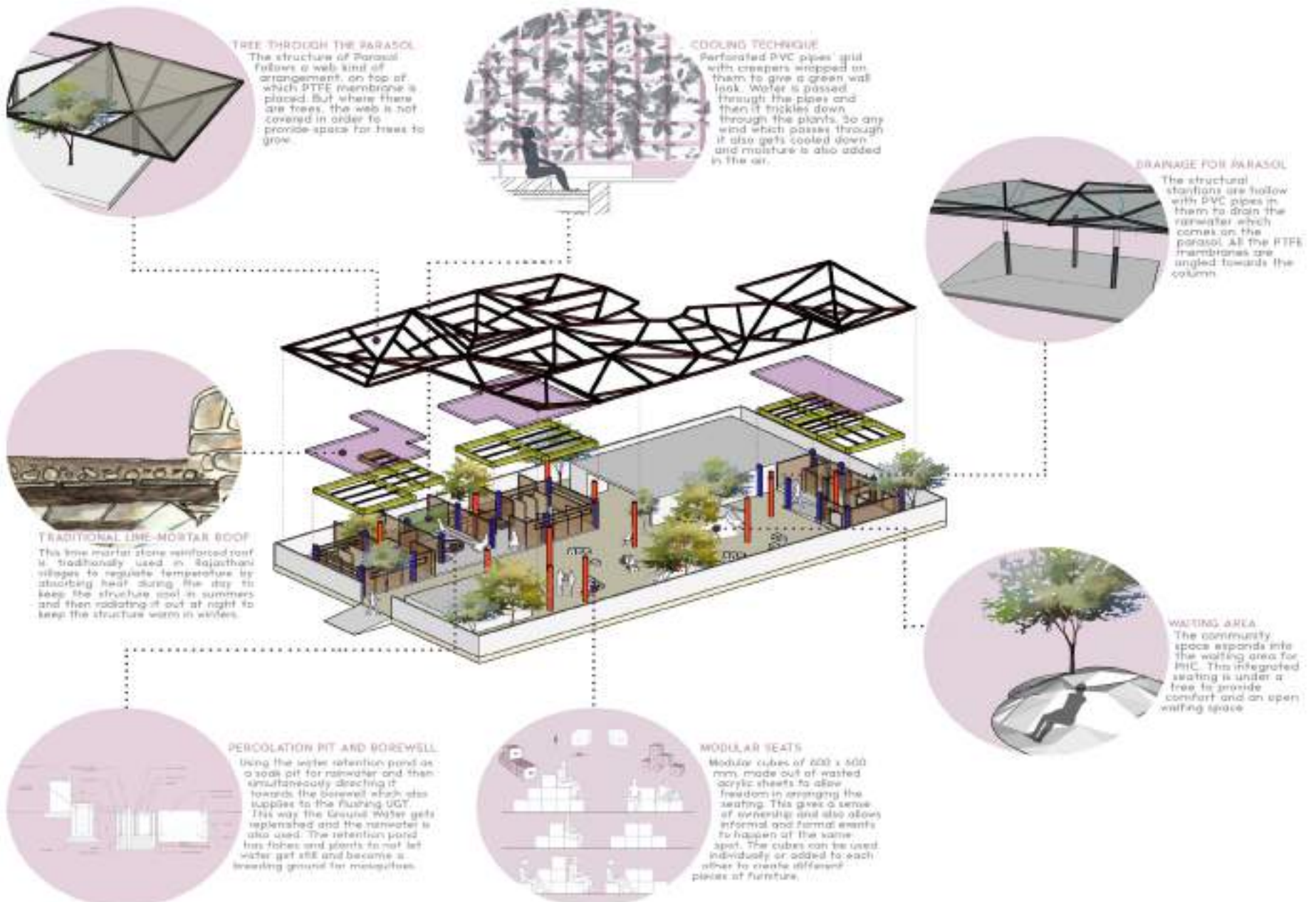
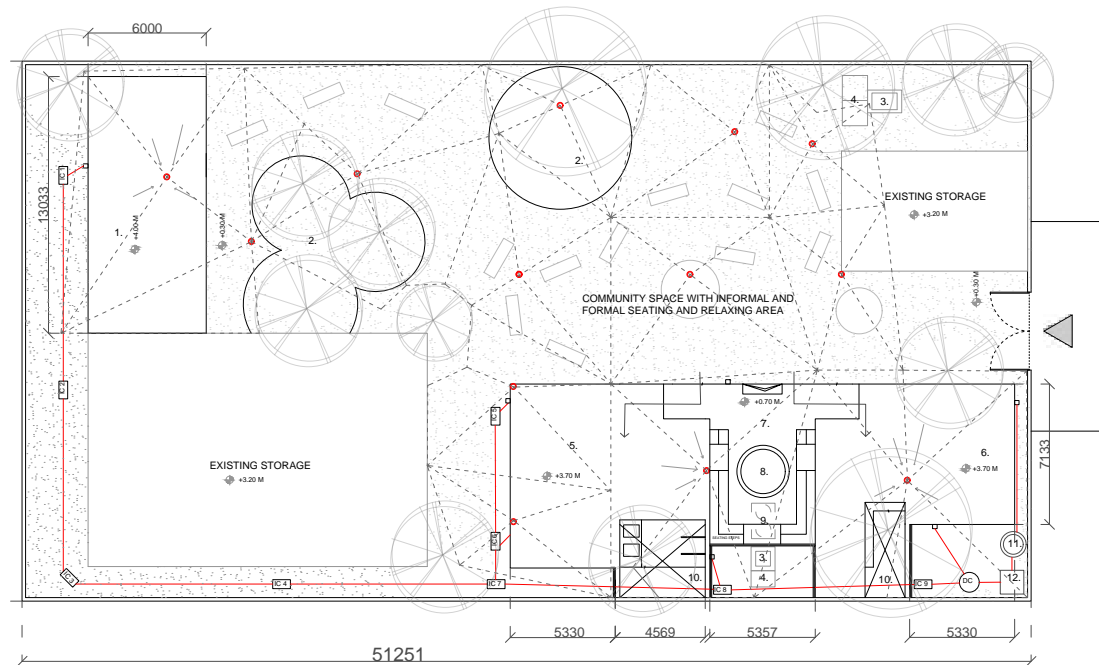
The project was located in a residential colony near the main road adjacent to DN Nagar metro station. The structure was divided into two parts, the Public Toilet and the Health Care Section. Steel stanchions and double pitched trusses have been used with mangalore tiles. The Public Washroom had two layers of walling of which one was a clay jaali wall. Light and ventilation of the Toilet could take place because of the jaali wall. Rainwater channels ran all along the sides of the walls, where the water that fell from the roof was taken to percolation pits to recharge ground water table.





**COMFORT STATION & PUBLIC HEALTHCARE CENTRE  
STONE FACTORY, JAIPUR**  
Tanvi Daga

The aim was to design not only a public washroom which serves the purpose of sanitation but also a space which can be enjoyed by the factory workers. Creating the PHC at this site would solve the worker's dilemma of choosing between work and their health. Since the site was in an extreme climate zone, the centre responded to the climate well, making the space comfortable for workers, so that they can also use it as a flexible community space. The seating designed for the community space was such that it could accommodate both informal and formal events and help in community building.



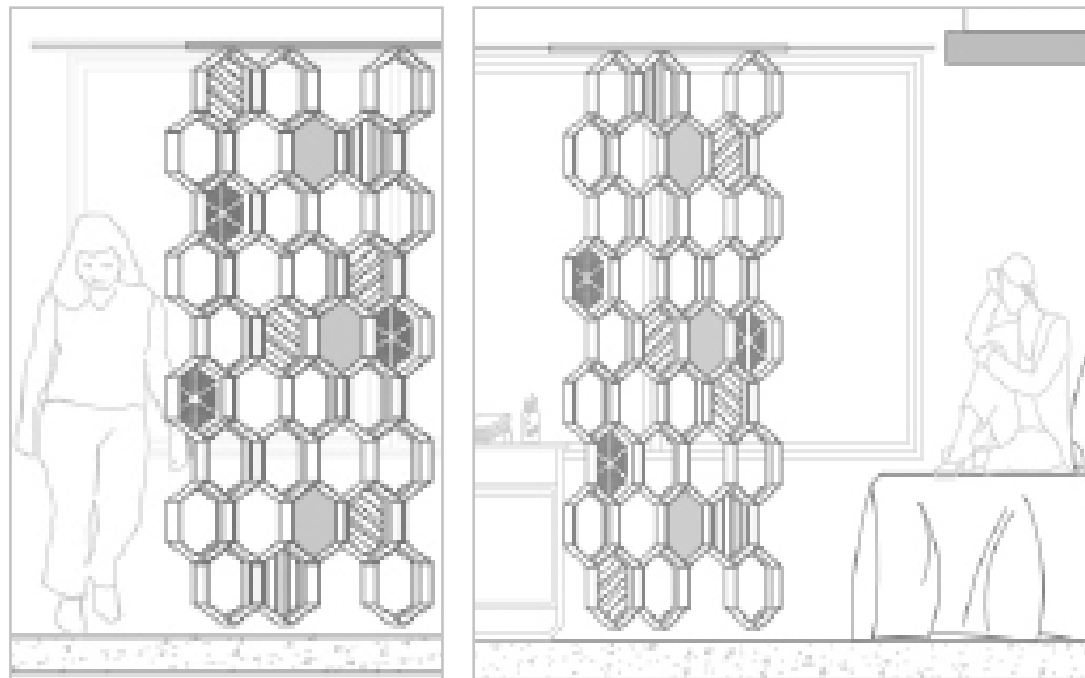
ALLIED DESIGN STUDIO - Making Room

Amidst the restrictions imposed due to Covid-19, the fourth semester was conducted online. This particular mode of working and being at home for extended hours, including organizing the space for events and celebrations with family and friends as well as performing various daily chores and other activities led to the idea of "Making Room". The general brief of the studio was organized around the idea - "Room of missing things or Room of longing" within which individually each student developed and finalized their own specific intent.

Faculty: Ankush Chandran, Dharmesh Mewada, George Jacob, Ginella George, Hussain Indorewala, Mansi Bhatt, Nikhil Khadilkar, Shweta Wagh, Sonal Sundararajan



THE TUNNEL  
Neha Shah



HEXAGONAL  
SILHOUETTE  
Shruti Bajaj



THE PULLING  
MACHINE  
Aishna  
Niranjan

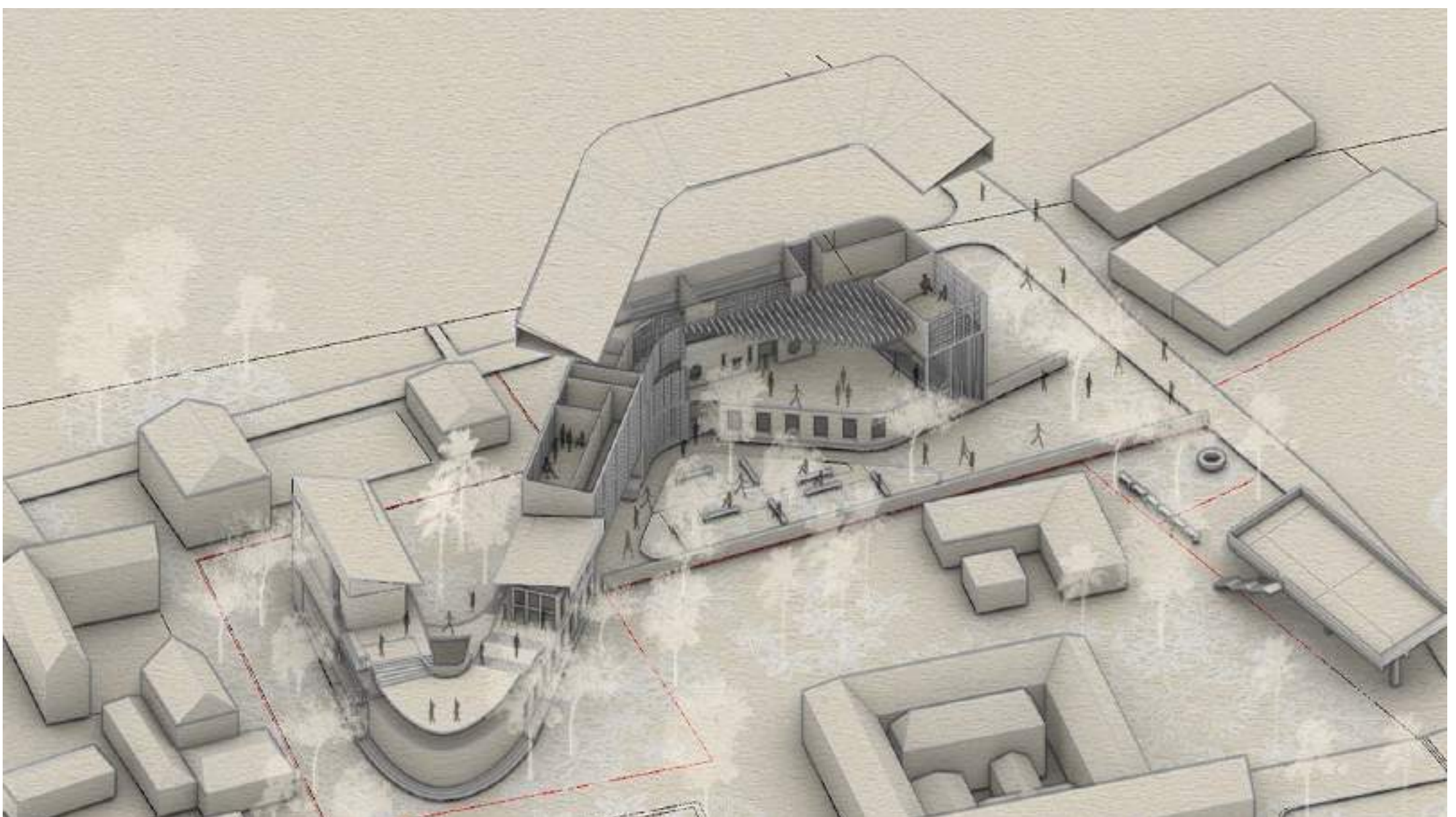
## ARCHITECTURAL DESIGN STUDIO : Architecture and Democracy, Kochi

The focus of the Semester IV Architectural Design studio was local governance for smaller urban centres. Such a focus is crucial in broad-basing urban growth beyond metropolitan centres. The project used the Indian government's Smart City programme as an opportunity to rethink spaces of civic governance in our cities. These buildings perform vital governance functions such as supply, maintenance, and regulation of services, building permissions and regulation, public health administration etc. The people who perform these duties work in high stress environments and the buildings aimed to address their needs and inspire them in full measure. Sites were selected in Fort Kochi, Mattancherry and Mulaserry Canal in Ernakulam.

Faculty: *Apurva Parikh, Avneesh Tiwari, Jude D'souza, Rohan Shivkumar, Sandeep Menon, Shilpa Gore Shah, Vishal Jayan, Vandana Ranjit Sinh*  
TA: *Aarti Nambissan*

**Madhura Hardas and Mohit Katke**

Mattancherry was formed as a result of the flooding of the river Periyar. Overtime, various events took place in the city island including the invasion of the Portuguese and the migration of the Jews which influenced the architecture and culture of Mattancherry to a great extent. These events left traces along the timeline creating diverse historical spaces that co-exist today. The Smart City Mission was looked at as an event which is imagined to add a new system in Mattancherry's governing body. The architecture of this project looked at the event spaces on site, through which it formed two distinct event spaces: The Heritage Space, which celebrated the monuments that hugged the site and the Governance and Community space which invited the people into the new 'change' created in Mattancherry's cultural and governing system.



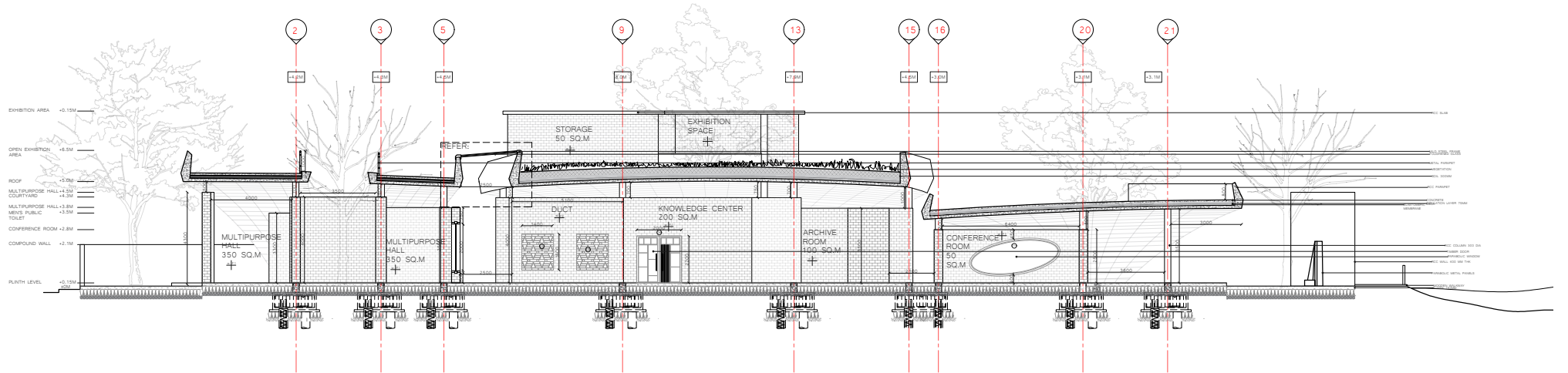


### PASSIVE RECREATION Ishika and Hritik

The design idea emerged from the combination of ward office and city observatory buildings. The intent was to create a space surrounded by a series of colonnades under one large single roof that secured the entire site. The organisation of space was determined by the canal edge where at one end it formed the waiting area and pick up point for water taxis and at the other end it is enclosed by the waste management facilities. The courtyard was centrally placed that cascaded down through a series of steps and ramps creating a seating space for the people. It was accompanied by a cafe on one of its sides. The upper floors were used as spill over areas on one side with the other side used by the students as an interactive reading and learning space which can be occasionally partitioned by sliding folding doors.

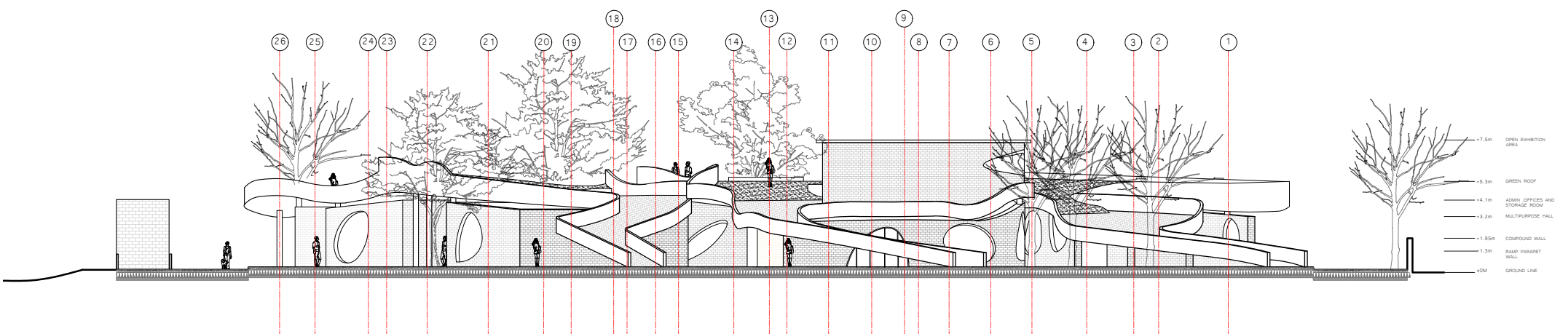
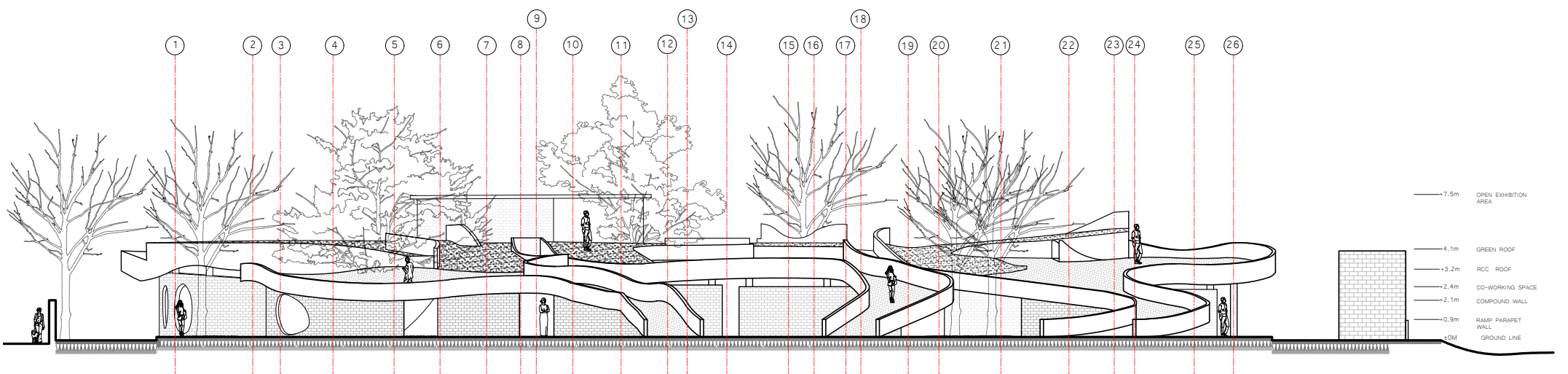
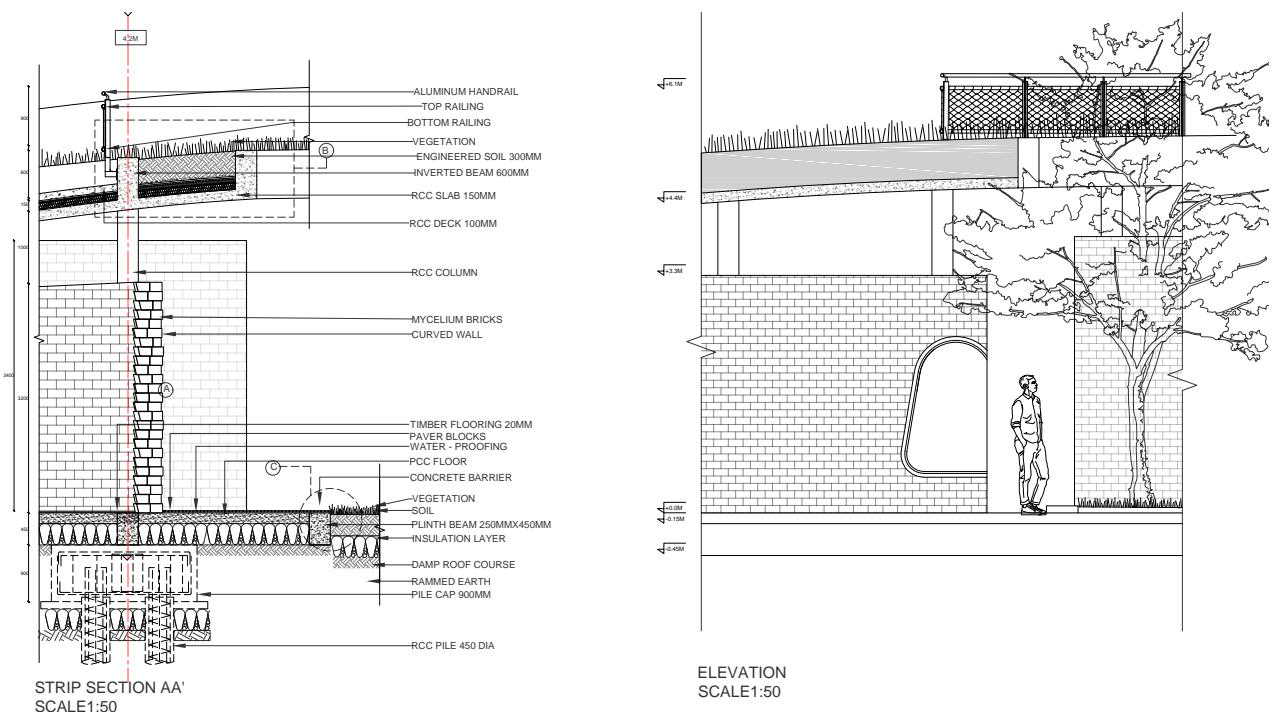


The sixth semester Integrated Design studio delved into detailing the public institution projects sited in the city of Kochi, which were designed as part of the architectural and allied design studios in Fifth semester. The studio developed the architectural designs into a set of well resolved working drawings, adopting relevant building systems into the design. A detailed and holistic resolution of design through technical representation of acquired knowledge of construction, services, landscape and building materials was done. Faculty: Ainsley Lewis, Dharmesh Mewada, Jamshid Bhiwandiwalla, Kimaya Keluskar, Vikram Pawar, Minal Yerramshetty, Sandhya Shuklabaidya, Swati Seshadri TA: Sneha Khulge

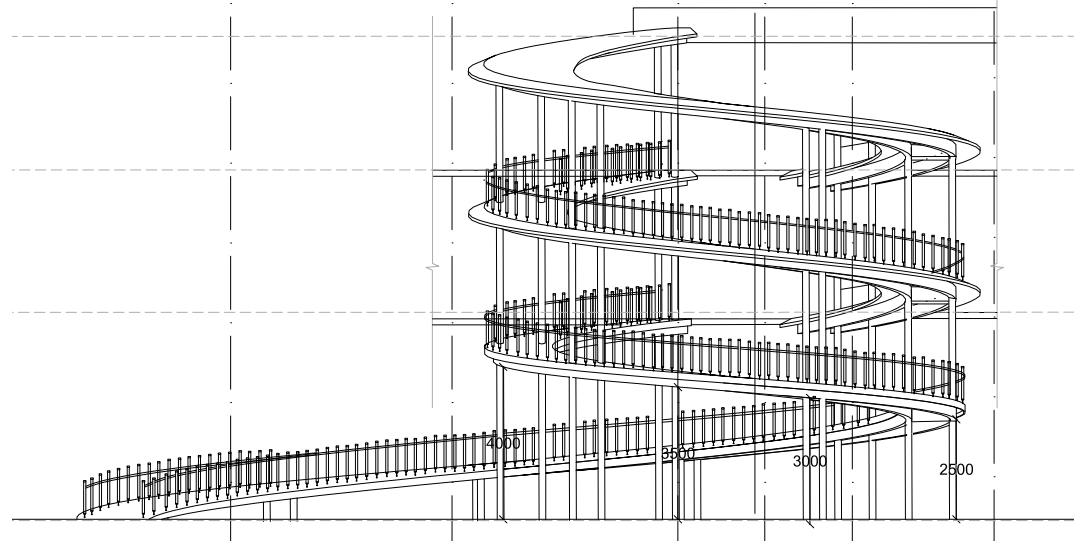
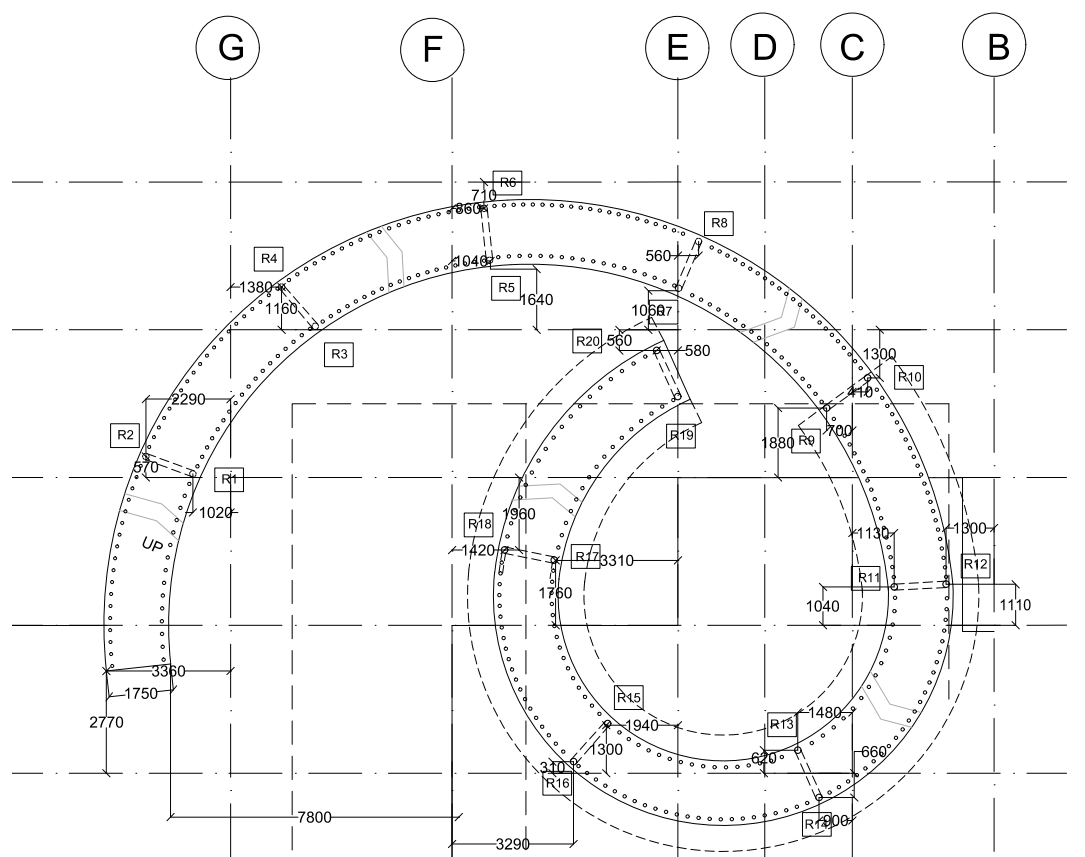
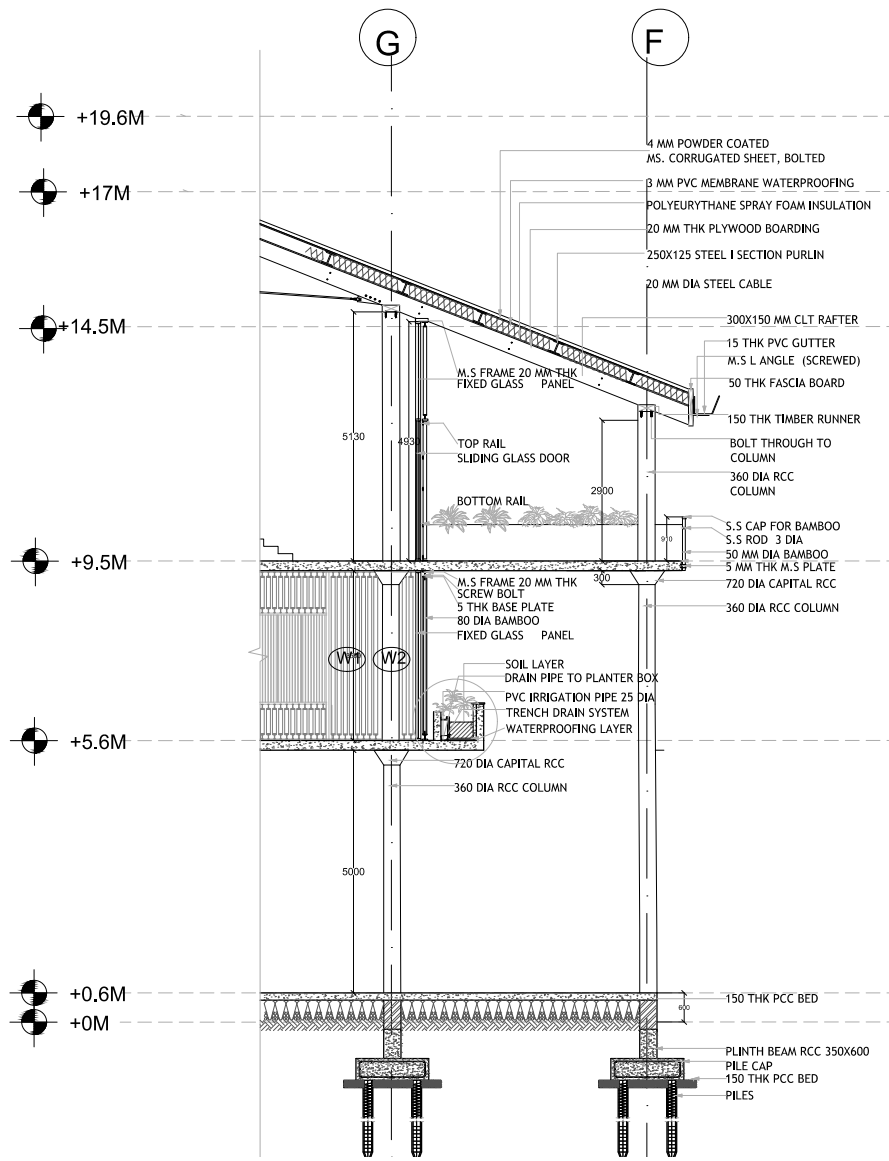


Priti Deoghare

The building was a curvilinear structure which derived its form after placing geometries on site considering the placement of trees and the connecting pathways. The roof of the structure was accessible with large ramps which were in both directions. The roof was designed to play with levels accomodated with green terrace spaces with concrete pathways to walk on. The building was a pavilion type structure, supported on RCC columns with upstand beams. The walling system used were dwarf walls which created room for natural sunlight and ventilation. The structure also had a floating RCC helical staircase supported with tension cables and alleys that were covered with skylights. The openings were parabolic curved windows which gave a wide open view of the surrounding.

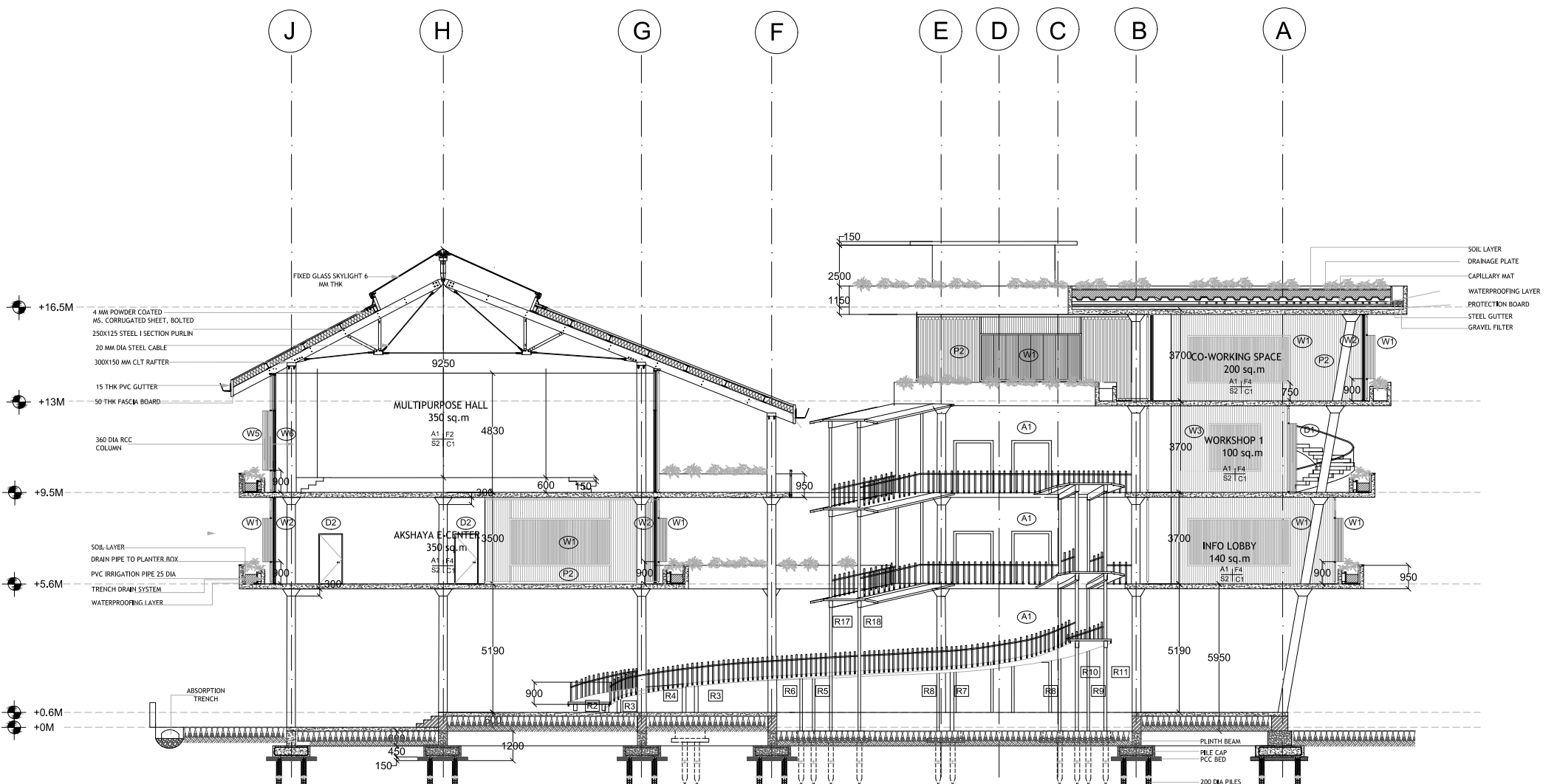






Diya Bejoy

The project was situated along the edge of the Mullassery Canal. A flat slab system allowed for a free plan and flexibility of spaces. A light openable bamboo skin on the north and east façade allowed to get filtered light and ventilation and the use of recessed chajjas blocked out the harsh Kerala sun from the south and west. A light steel ramp formed the core circulation. A light steel cable trussed system with a skylight formed the roof of the multipurpose hall while a green roof sprawled over the rest, helping in absorbing rainwater, providing insulation and also mitigating the heat island effect decreasing the load on mechanical cooling.



ALLIED DESIGN STUDIO : LANDSCAPE

The Allied Design studio for the Third Year in the second semester was inclined towards understanding ways of developing the landscape programme and designing the open spaces of the students' Architecture Design Studio sites. The students were tasked to develop open space strategies and eventually design for the sites and develop them as public landscapes.

Faculty: Arjun Sharma, Bandita De, Sandeep Menon, Sanyukta Sanjeev, Shruti Sheth, Swati Seshadri



- cannonball tree
- african tulip
- saptaparni
- indian beech
- neem tree
- barana bush



**REINTERPRETING THE HISTORY OF KOCHI THROUGH THE LENS OF LANDSCAPE**  
**Nishanti Srinivasan**

The project started with the idea of a culture park that was reflective of art forms of the area, specifically dance, bringing out the idea of movement as a performance. Looking back to the history of Kochi (a city founded by the flooding of Muziris) and the art produced here focusing on the tension between land as water as entities, these ideas manifested through the succession of landscape, the various stages of submersion of land into water/birth of land out of water. The project can be looked at as a curation of experiences, of movements in dance reinterpreted through the lens of landscape, recreating the act of using one's body and face to tell stories through a heightened perception of oneself and one's own body.

- bat's wing fern (at transition)
- native sedge
- indian shot
- sweet flag

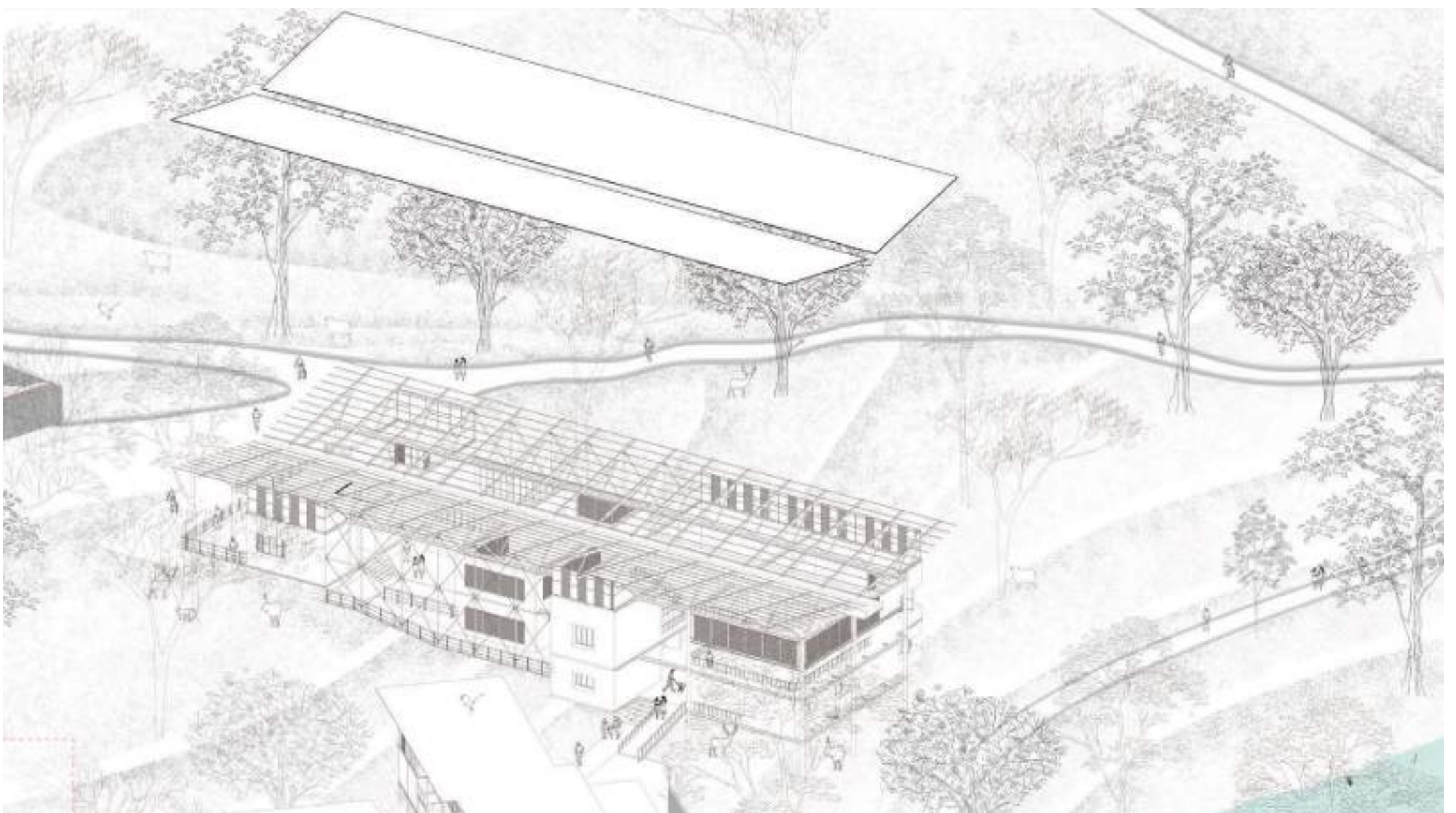
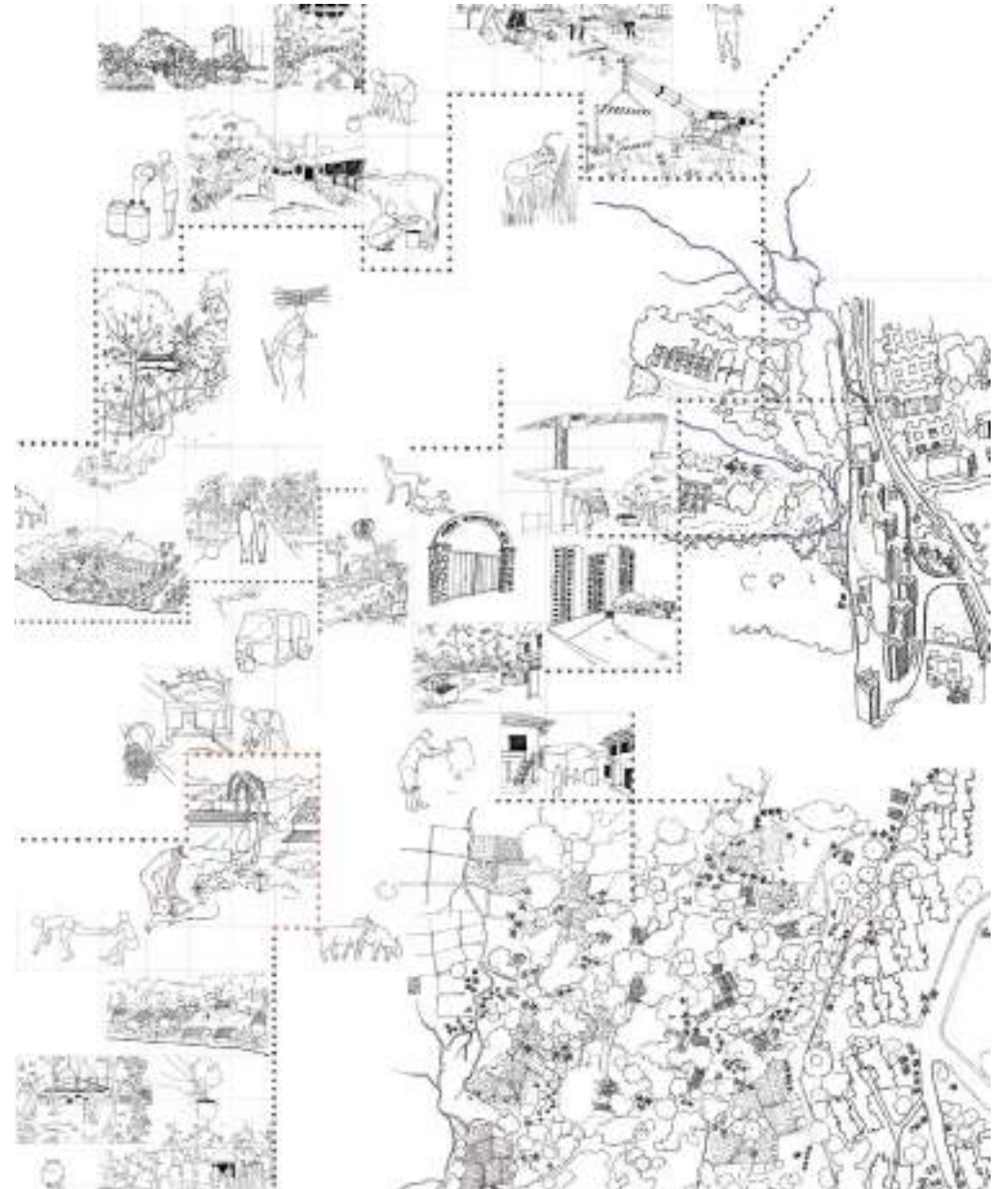
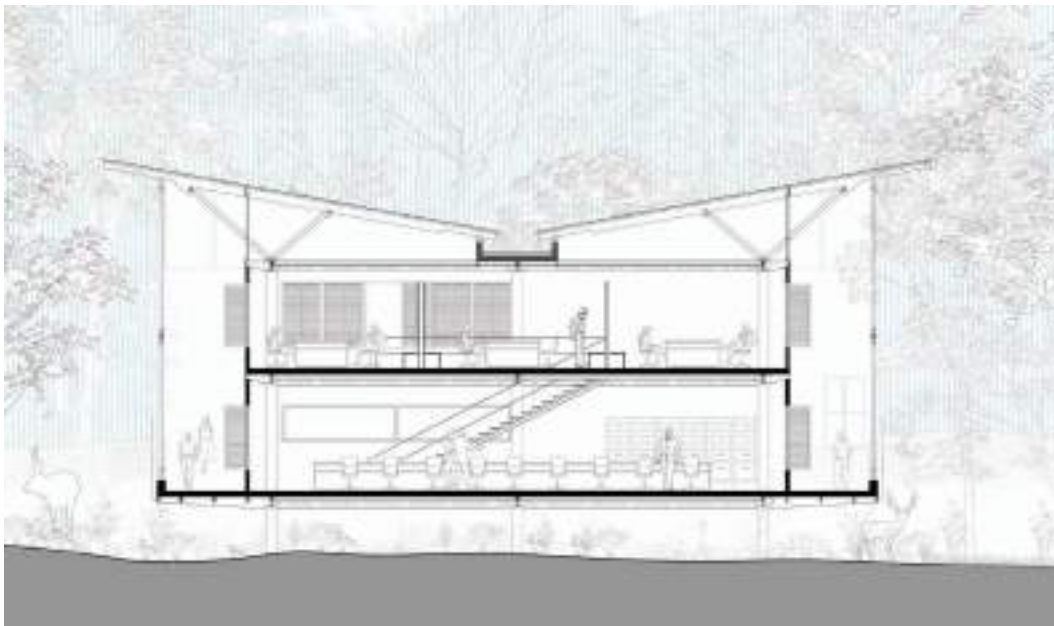


## DESIGN DISSERTATION COLLOQUIUM

The KRVA Dissertation Colloquium as a practice encouraged final year students to push the boundaries of formal and spatial explorations and enrich the possibilities of an architectural and environmental practice. The Colloquium was an opportunity to hear different voices and witness dissections of academic work - its strategic strength, rigour, possibility, skill and competence. The Colloquium this year, unfolded itself as an Online Exhibition, showcasing the work of all the entries received. The format allowed the broadening of its horizon and began as a dialogue through questions in the discipline, beyond the physical walls of the school. It was an educational opportunity for students, faculty and practitioners from all across the globe to witness and participate in a discourse on values, speculations, intents and experiments in architecture and the urban landscape.

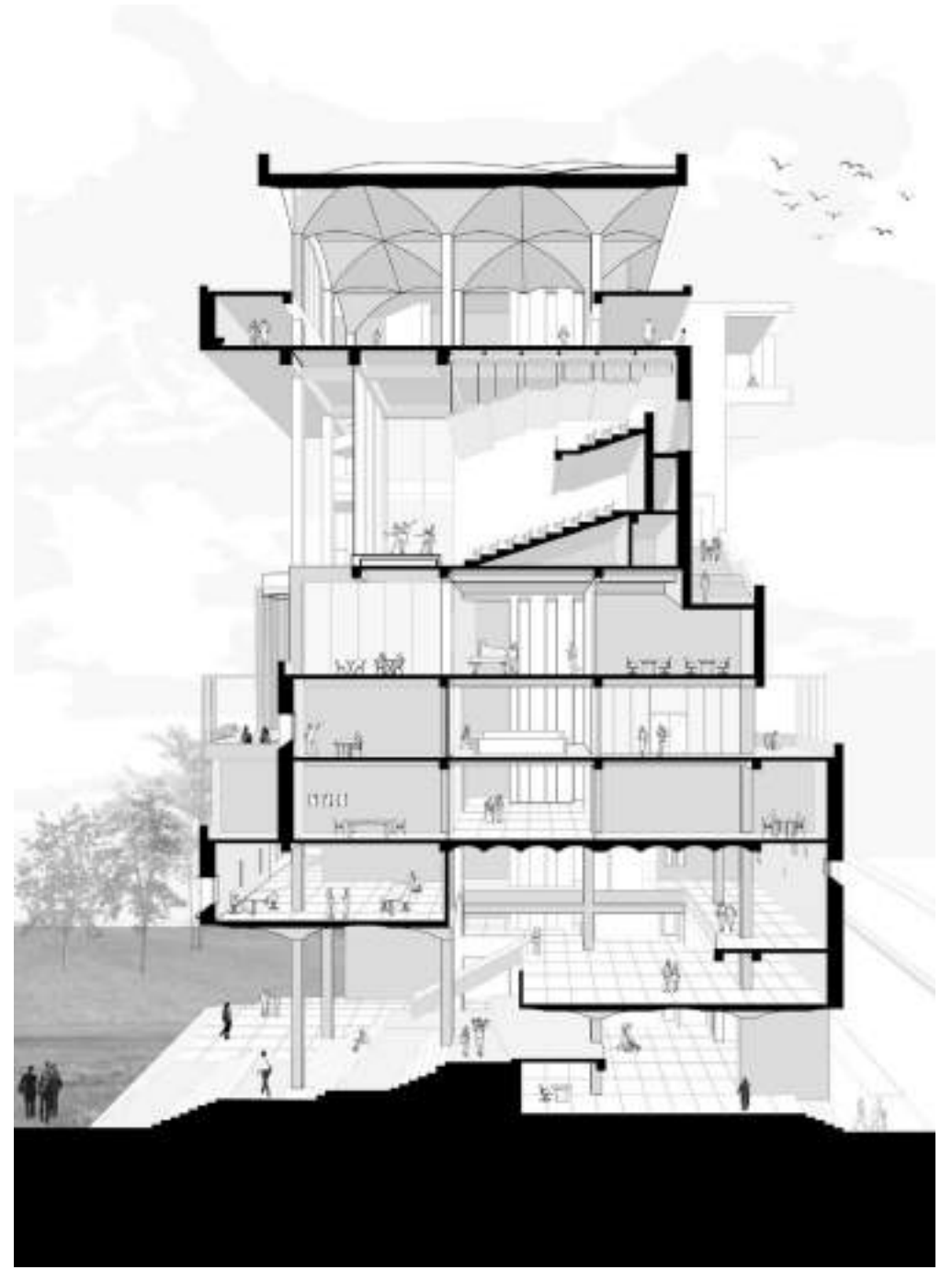
**AAREY X CITY : RE-IMAGINATION OF CITY AND FOREST EDGE**  
**Suraj Thorat**

The dissertation attempted to question if architecture be instrumental in finding an ecologically sensitive approach towards the treatment of the edge of the forest to propose alternative programs, prevent destructive development and help in sustaining the existing ecosystem that thrives in the forest? In doing so, can it validate the existence of the ancient forest dwellers and intervene such that their socio-cultural aspects are visible to the people of the city? The thesis aimed to understand this complex relationship at the edge of nature and infrastructure and offered a lens to perceive and develop this ecosystem which will establish a symbiotic relationship for positive growth of the region.



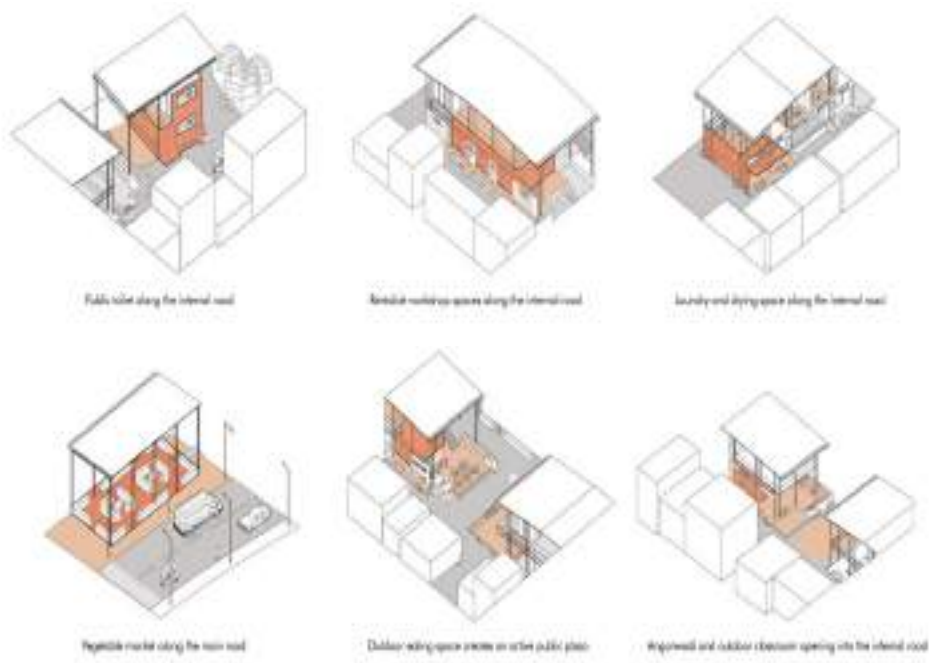
**HATE, SPACE, GHETTOS : THE CITY WITHIN THE CITY**  
Anandita Rangarajan

Hate + Space = Ghettos described a phenomenon of social and spatial exclusion growing in cities across India today. Practices of social exclusion that have led to the formation of the largest Muslim ghetto in the country was explored in the riot-prone city of Ahmedabad, Gujarat, India. The thesis was a thought experiment, a provocation that challenged the social attitudes that lead to extreme segregation in cities by speculating the future of a ghetto. The boundary of the ghetto was imagined as a way of re-inventing the identity of the marginalized while creating an opportunity to engage with the city. The idea of a self-built, voluntary exclusionary periphery was tested through an architectural proposal. It advocated a definitive future—neither utopic nor dystopic, but acted as a mirror merely reflecting urban possibilities.



### THE PARADOX OF RECOGNITION: A CASE OF THE HIJRA COMMUNITY IN MALVANI Shreya Bansal

The thesis was an inquiry into the transgender community, who are often excluded from the process of normalization. Their 'otherness' has forced them to lead a marginalized existence on the fringes of society, dwelling in poverty and social difference triggered by inequalities of gender. The project was set in Malvani, an extremely dense residential settlement with very limited 'public spaces'. The lifestyle of hijras living there however was very different from the other residents. While the threshold between the 'home' and the 'outside' was blurred for most, the hijras preferred to stay in the privacy of their homes. The purpose of the project was thus, to create an inclusive public space instead of a self-sufficient 'enclave' to empower marginalised communities.

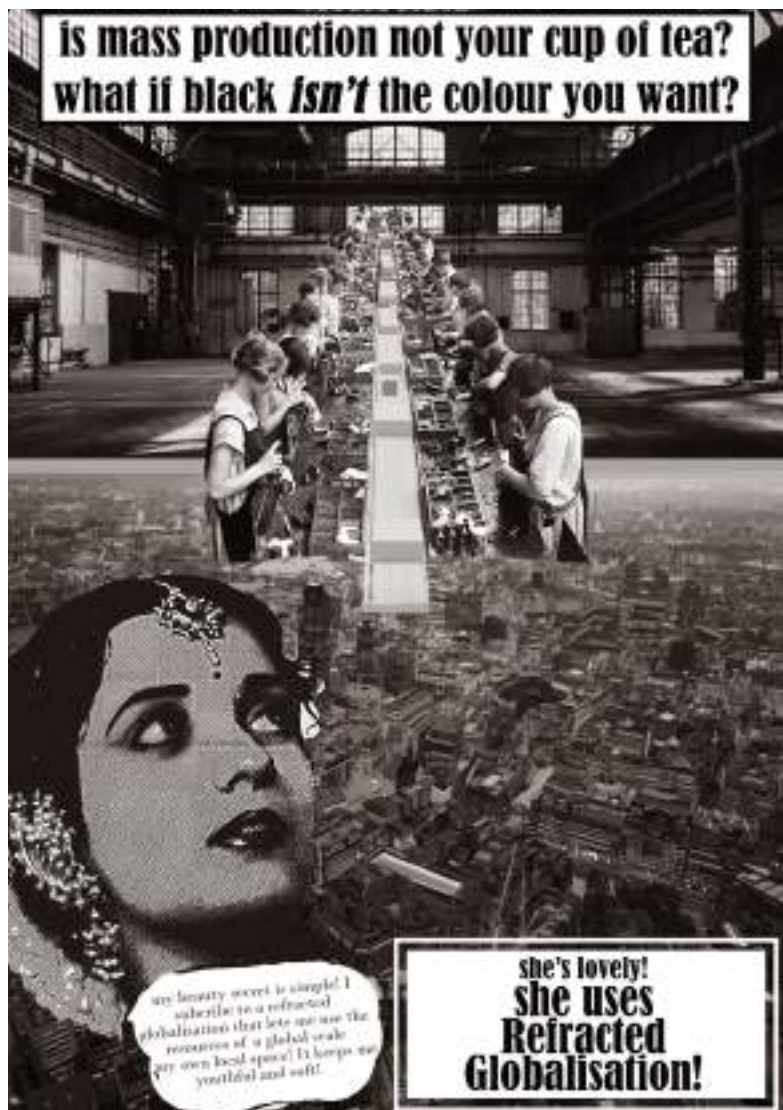


The electives at the school are seen as a space for new and fresh methods and modes of engagement within the academic pedagogy of the institute. The KRVIA Winter Elective Exhibition showcased the outcome of all the electives conducted from 4th March to 11th March 2021. 17 electives were conducted, which operated under the four verticals of Theory, Systems, Methods and Culture. The workshops were framed under the larger theme of the Apocalypse Manifesto which helped the students and faculty to generate questions and discussions around architecture and its allied domains.



**RELEVANCE, REPRESENTATION AND CULTURE**  
Apoorva Iyengar

This elective, through examples from the medium of cinema, texts, paintings, exhibitions, etc. discussed multidisciplinary forms of representation and interpretations of our historical narratives and contemplated how these have effects far beyond merely depicting the past.



**(DE)GLOBALIZATION AND CITIES**  
Dr. Binti Singh

The elective situated India as undergoing a period of extraordinary urban transformation accelerated by the forces of globalization (economic, political and socio-cultural). Questions like new imaginaries of city life, the role of technology, visions for the future were discussed through examples of Indian cities.

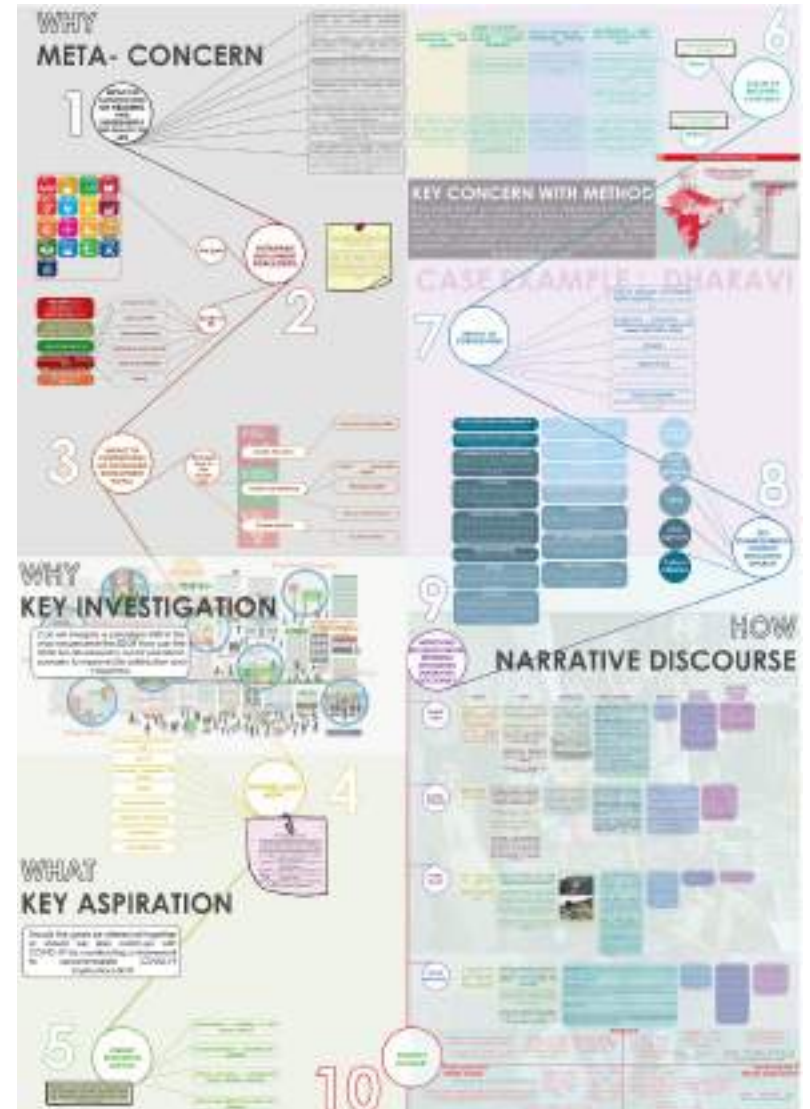
Nidhish Gupta : <https://youtu.be/4Jd1p6K5cXE>  
Pankaja Dhamnkar : [https://youtu.be/cJl\\_33IFGbl](https://youtu.be/cJl_33IFGbl)  
Fleur Dsouza : <https://youtu.be/cGzOY6wy068>  
**TRACING HISTORY THROUGH DOCUMENTARIES**  
Jamshid Bhiwandiwalla

The elective used ten documentary films to understand the theme of Towards an Apocalypse Manifesto to question the new normal in the background of the pandemic. Five themes were set up to that changed the understanding of the world through similar events.



**REVERSING THE ENVIRONMENTAL GENERATIONAL AMNESIA**  
Ketaki Bhadgaonkar

The elective challenged the top-down approach adopted by most urban development projects to question the contested ownership of the environmental commons and 'reverse' the amnesia as designers and thinkers of the future.



**WORKING WITH SUSTAINABLE DEVELOPMENT GOALS**  
Kimaya Keluskar

Students identified communities and created podcasts discussing cultural shifts owing to globalisation, impact of pandemic on daily life and how Sustainable Development Goals could act as catalyst to re-establish the lost culture, livelihood, liveability, and wellbeing.



**READING THE CONSTRUCT**  
Shantanu Khandkar

The elective used the available measured drawing documentation carried out at the KRVA to understand the hierarchical nature of built form, its geography, construction, climate and culture.



**RUPTURING ARCHITECTURE OF THE HETERONORMATIVE**  
Aishwarya Padmanabhan

The elective, through engagement, introduced the students to various ways in which space can be read within questions of gender and sexuality, through textual and visual representations.

**FIVE FUTURES: SOCIAL THEORY AND SCIENCE FICTION**  
Hussain Indorewala

This elective discussed social theory through the genre of science fiction film.



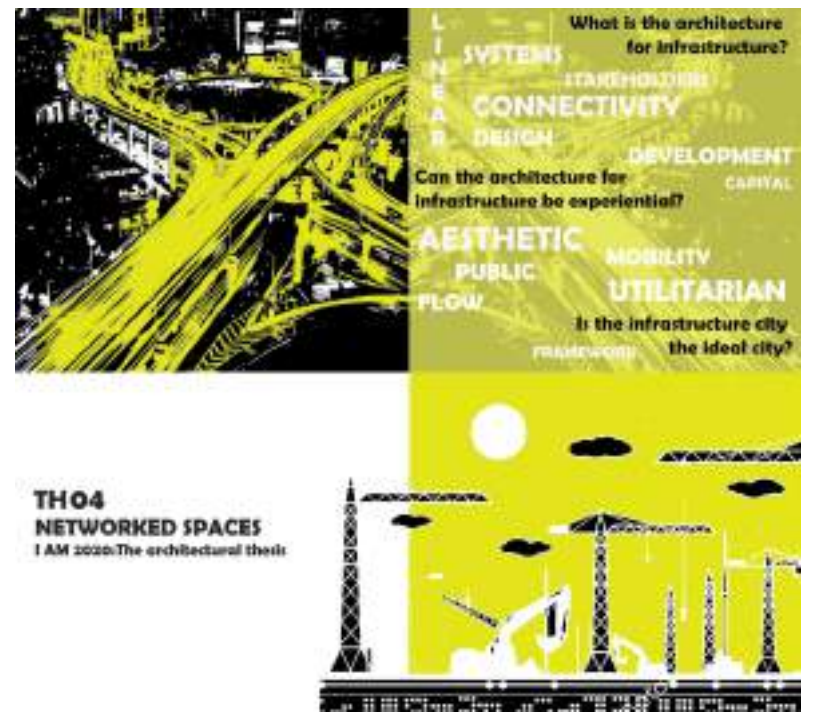
**THE BODY OF ARCHITECTURE - I AM 2020: THE ARCHITECTURE THESIS**  
Sonal Sundararajan

This workshop focused on ideas of the body of architecture – its construct in architectural discourse, the phenomenological body, a critique of gender, imaginations, the cyborg etc.



**TO RE-PUBLIC - I AM 2020: THE ARCHITECTURE THESIS**  
George Jacob

The workshop explored the meaning of public, its socio-political landscape and its formal expression.



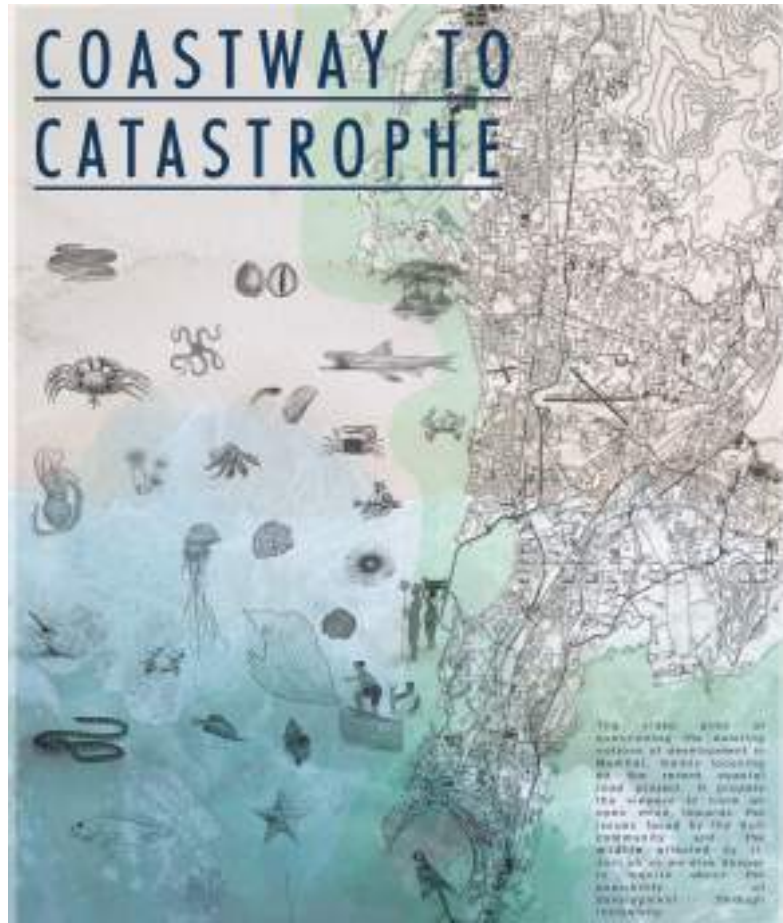
**NETWORKED SPACES - I AM 2020: THE ARCHITECTURE THESIS**  
Ginella George

The workshop explored infrastructure and architecture – the architecture for infrastructure, its experience, the ideal city etc.



**NATURE AND ECOLOGY - I AM 2020: THE ARCHITECTURE THESIS**  
Shirish Joshi

The workshop focused on ideas that lie at the intersection of nature and architecture – ecology, the construct of nature in architectural discourse etc.



**UNRAVELLING THE ANTHROPOCENE: BEYOND CLIMATE CRISIS**  
Sandeep Menon

The elective aimed to sensitise and expose the students to the scientific underpinnings of the concept of 'anthropocene', climate crisis and the possible future scenarios by integrating resilience thinking in both architectural pedagogy as well as praxis.



**PRINT AS NARRATIVE**  
Swati Seshadri

This elective looked at printmaking as a method of development and was introduced through the lens of interesting artists.



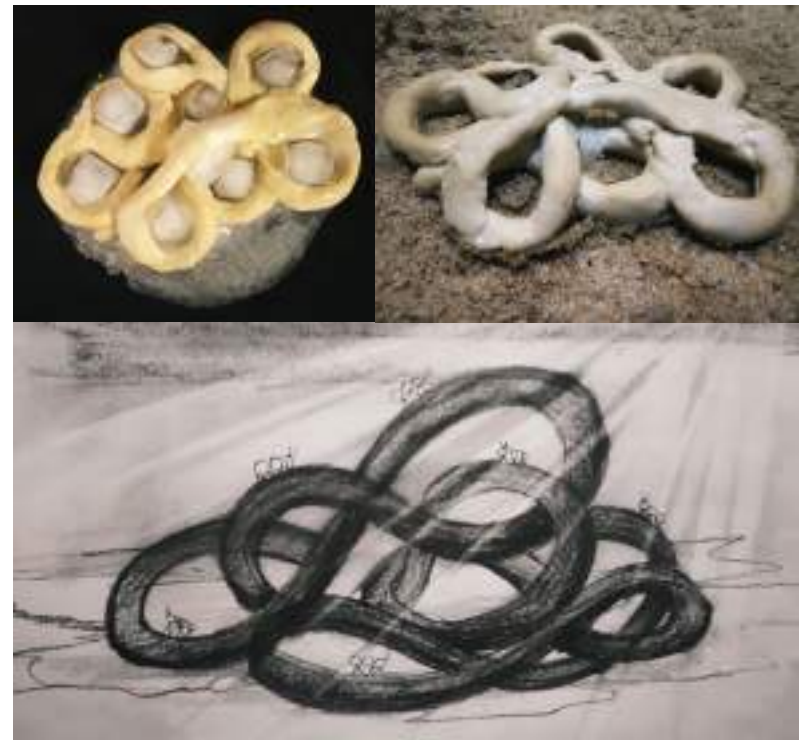
**HOUSING FINANCIALIZATION**  
Mamta Patwardhan

The elective introduced the concepts of finance within the real estate sector that has been one of the biggest wealth creators.



**GENERATIVE DESIGN**  
Dharmesh Mewada

This elective aimed at developing critical & productive thinking based on systems and methods which guided the student through the process of generative design – the generation of a product or design and not just as an object.



**MATERIAL MORPHOLOGIES**  
Misbah Hararwala

The elective understood resilience through the act of making and materiality. A series of physical operations were conducted on dough to study phenomenological changes caused by exposing it to various conditions of heat, moisture, force etc.



Editorial Team:

Director:  
*Manoj Parmar*

Dean:  
*Ainsley Lewis*

Faculty in charge:  
*Ginella George*

Student Coordinators:  
*Srusti Shah*  
*Sanyukta Bagrecha*  
*Tanya Nichwani*

Team:  
*Raj Dhikle*  
*Kanchi Gupta*  
*Aparna Venkatasubramanian*  
*Dalika Dharod*  
*Shivali Sheth*  
*Aishwarya Adoni*  
*Anjana Kannampuzha*

Upanagar Shikhan Mandal's  
Kamla Raheja Vidyanidhi Institute for Architecture and Environmental Studies

Vidyanidhi Bhavan-II, Vidyanidhi Marg, J.V.P.D Scheme, Mumbai 400049, India.  
Web : [www.krvia.ac.in](http://www.krvia.ac.in)

 @KRVIA  @k.r.v.i.a